

## SLP76 Polyclonal Antibody

Catalog number: 12728-1-AP

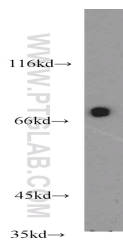
Size: 34 µg/150 µl

Source: Rabbit

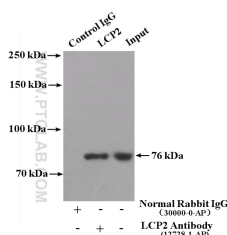
Isotype: IgG

Synonyms:

LCP2; LCP2, Lymphocyte cytosolic protein 2, SLP 76, SLP 76 tyrosine phosphoprotein, SLP76



Jurkat cells were subjected to SDS PAGE followed by western blot with 12728-1-AP(LCP2 antibody) at dilution of 1:1000



IP Result of anti-LCP2 (IP:12728-1-AP, 4ug; Detection:12728-1-AP 1:500) with Jurkat cells lysate 4000ug.

### Applications

Tested applications:	ELISA, WB, IP
Species specificity:	Human,Mouse,Rat; other species not tested.
Calculated SLP76 MW:	533aa,60 kDa
Observed SLP76 MW:	70-76 kDa
Positive WB detected in	Jurkat cells, K-562 cells, RAW264.7 cells
Positive IP detected in	Jurkat cells
Recommended dilution:	WB: 1:500-1:5000 IP: 1:200-1:2000

Application key: WB = Western blotting, IHC = Immunohistochemistry, IF = Immunofluorescence, IP = Immunoprecipitation

### Immunogen information

Immunogen:	Ag3432
GenBank accession number:	BC016618
Gene ID (NCBI):	3937
Full name:	Lymphocyte cytosolic protein 2 (SH2 domain containing leukocyte protein of 76kDa)

### Product information

Purification method:	Antigen affinity purification
Storage:	PBS with 0.1% sodium azide and 50% glycerol pH 7.3. Store at -20°C.