

PFDN2 Polyclonal Antibody

Catalog number: 13053-1-AP

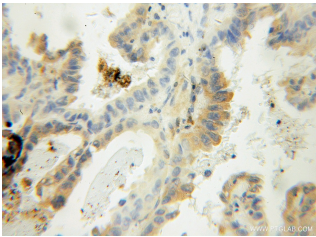
Size: 35 µg/150 µl

Source: Rabbit

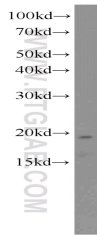
Isotype: IgG

Synonyms:

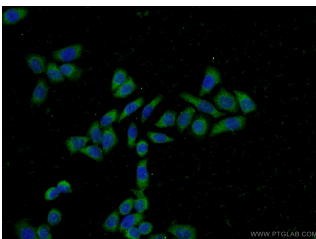
PFDN2; PFD2, PFDN2,
prefoldin subunit 2



Immunohistochemical of paraffin-embedded human lung cancer using 13053-1-AP (PFDN2 antibody) at dilution of 1:100 (under 10x lens)



L02 cells were subjected to SDS PAGE followed by western blot with 13053-1-AP (PFDN2 antibody) at dilution of 1:300



Immunofluorescent analysis of L02 cells using 13053-1-AP (PFDN2 Antibody) at dilution of 1:50 and Alexa Fluor 488-conjugated AffiniPure Goat Anti-Rabbit IgG(H+L)

Applications

Tested applications:	ELISA, WB, IHC, IF
Species specificity:	Human; other species not tested.
Calculated PFDN2 MW:	154aa, 17 kDa
Observed PFDN2 MW:	17-20 kDa
Positive WB detected in:	L02 cells
Positive IHC detected in:	Human lung cancer tissue
Positive IF detected in:	L02 cells
Recommended dilution:	WB: 1:200-1:1000 IHC: 1:20-1:200 IF: 1:20-1:200

Application key: WB = Western blotting, IHC = Immunohistochemistry, IF = Immunofluorescence, IP = Immunoprecipitation

Immunogen information

Immunogen:	Ag3720
GenBank accession number:	BC012464
Gene ID (NCBI):	5202
Full name:	Prefoldin subunit 2

Product information

Purification method:	Antigen affinity purification
Storage:	PBS with 0.1% sodium azide and 50% glycerol pH 7.3. Store at -20°C.