

CKMT2 Polyclonal Antibody

Catalog number: 13207-1-AP

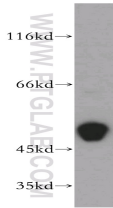
Size: 20 µg/150 µl

Source: Rabbit

Isotype: IgG

Synonyms:

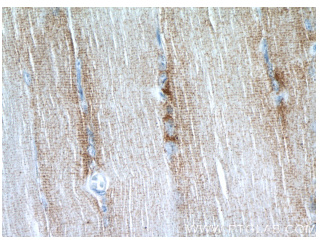
CKMT2; CKMiMi, CKMT2, Mib
CK, S MtCK, SMTCK



human skeletal muscle tissue were subjected to SDS PAGE followed by western blot with 13207-1-AP(CKMT2 antibody) at dilution of 1:800



Immunohistochemistry of paraffin-embedded human skeletal muscle tissue slide using 13207-1-AP(CKMT2 Antibody) at dilution of 1:50 (under 10x lens)



Immunohistochemistry of paraffin-embedded human skeletal muscle tissue slide using 13207-1-AP(CKMT2 Antibody) at dilution of 1:50 (under 40x lens)

Applications

Tested applications:	ELISA, WB, IHC
Species specificity:	Human, Mouse, Rat; other species not tested.
Calculated CKMT2 MW:	419aa, 48 kDa
Observed CKMT2 MW:	48 kDa
Positive WB detected in	Human skeletal muscle tissue, human heart tissue, Jurkat cells
Positive IHC detected in	Human skeletal muscle tissue, human heart tissue
Recommended dilution:	WB: 1:500-1:5000 IHC: 1:20-1:200

Application key: WB = Western blotting, IHC = Immunohistochemistry, IF = Immunofluorescence, IP = Immunoprecipitation

Immunogen information

Immunogen:	Ag3971
GenBank accession number:	BC029140
Gene ID (NCBI):	1160
Full name:	Creatine kinase, mitochondrial 2 (sarcomeric)

Product information

Purification method:	Antigen affinity purification
Storage:	PBS with 0.02% sodium azide and 50% glycerol pH 7.3. Store at -20°C.