

## GAS2 Polyclonal Antibody

Catalog number: 11941-2-AP

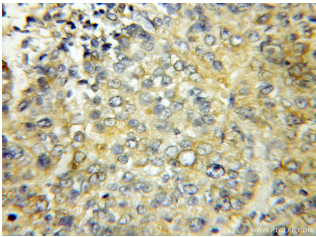
Size: 26 µg/150 µl

Source: Rabbit

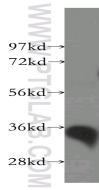
Isotype: IgG

Synonyms:

GAS2; GAS 2, GAS2, growth arrest 2



Immunohistochemical of paraffin-embedded human lung cancer using 11941-2-AP(GAS2 antibody) at dilution of 1:50 (under 10x lens)



human kidney tissue were subjected to SDS PAGE followed by western blot with 11941-2-AP(GAS2 antibody) at dilution of 1:500

### Applications

Tested applications:	ELISA, WB, IHC
Species specificity:	Human,Mouse,Rat; other species not tested.
Calculated GAS2 MW:	313aa,35 kDa
Observed GAS2 MW:	35 kDa
Positive WB detected in	Human kidney tissue, human liver tissue
Positive IHC detected in	Human lung cancer tissue
Recommended dilution:	WB: 1:500-1:5000 IHC: 1:20-1:200

Application key: WB = Western blotting, IHC = Immunohistochemistry, IF = Immunofluorescence, IP = Immunoprecipitation

### Immunogen information

Immunogen:	Ag2540
GenBank accession number:	BC040470
Gene ID (NCBI):	2620
Full name:	Growth arrest-specific 2

### Product information

Purification method:	Antigen affinity purification
Storage:	PBS with 0.1% sodium azide and 50% glycerol pH 7.3. Store at -20°C.