

PSMC1 Polyclonal Antibody

Catalog number: 11196-1-AP

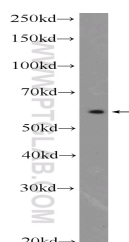
Size: 36 µg/150 µl

Source: Rabbit

Isotype: IgG

Synonyms:

PSMC1; P26S4, p56, PSMC1, S4



mouse brain tissue were subjected to SDS PAGE followed by western blot with 11196-1-AP(PSMC1 Antibody) at dilution of 1:1000

Background

PSMC1(26S protease regulatory subunit 4) is also named as p26s4 and belongs to the AAA ATPase family. The 26S protease is involved in the ATP-dependent degradation of ubiquitinated proteins. The regulatory (or ATPase) complex confers ATP dependency and substrate specificity to the 26S complex.

Applications

Tested applications:	ELISA, WB
Cited applications:	WB
Species specificity:	Human, Mouse, Rat; other species not tested.
Cited species:	Human, rat
Calculated PSMC1 MW:	49 kDa
Observed PSMC1 MW:	52-57 kDa
Positive WB detected in	Mouse brain tissue, A549 cells, HeLa cells, Jurkat cells, mouse lung tissue
Recommended dilution:	WB: 1:500-1:5000

Application key: WB = Western blotting, IHC = Immunohistochemistry, IF = Immunofluorescence, IP = Immunoprecipitation

Immunogen information

Immunogen:	Ag1677
GenBank accession number:	BC016368
Gene ID (NCBI):	5700
Full name:	Proteasome (prosome, macropain) 26S subunit, ATPase, 1

Product information

Purification method:	Antigen affinity purification
Storage:	PBS with 0.1% sodium azide and 50% glycerol pH 7.3. Store at -20°C.