

## Dymeclin Polyclonal Antibody

Catalog number: 12001-1-AP

Size: 20 µg/150 µl

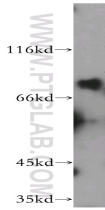
Source: Rabbit

Isotype: IgG

Synonyms:

DYM; DMC, DYM, Dymeclin,

FLJ20071, FLJ90130, SMC



HEK-293 cells were subjected to SDS PAGE followed by western blot with 12001-1-AP(DYM antibody) at dilution of 1:600

### Background

Human Dymeclin is encoded by DYM gene, defects in which are the cause of Dyggve-Melchior-Clausen syndrome (DMC) and Smith-McCort dysplasia (SMC). DMC is a rare autosomal recessive disorder characterized by short trunk dwarfism, microcephaly and psychomotor retardation, with cutaneous cells containing dilated rough endoplasmic reticulum, enlarged and aberrant vacuoles and numerous vesicles [PubMed: 12491225]. Distinct with features of DMS, SMC is a rare osteochondrodysplasia characterized by short limbs and trunk with barrel-shaped chest [PubMed: 19005420]. Dymeclin is a not a stably anchored transmembrane protein with a transmembrane domain, but it shuttles between Golgi and cytosol, which is necessary for correct organization of Golgi apparatus [PubMed: 18996921].

### Applications

Tested applications:	ELISA, WB
Species specificity:	Human, Mouse, Rat; other species not tested.
Calculated Dymeclin MW:	669aa, 76 kDa
Observed Dymeclin MW:	76-80kd
Positive WB detected in	HEK-293 cells
Recommended dilution:	WB: 1:500-1:5000

Application key: WB = Western blotting, IHC = Immunohistochemistry, IF = Immunofluorescence, IP = Immunoprecipitation

### Immunogen information

Immunogen:	Ag2600
GenBank accession number:	BC001252
Gene ID (NCBI):	54808
Full name:	Dymeclin

### Product information

Purification method:	Antigen affinity purification
Storage:	PBS with 0.1% sodium azide and 50% glycerol pH 7.3. Store at -20°C.