

SLC25A11 Polyclonal Antibody

Catalog number: 12253-1-AP

Size: 45 µg/150 µl

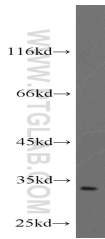
Source: Rabbit

Isotype: IgG

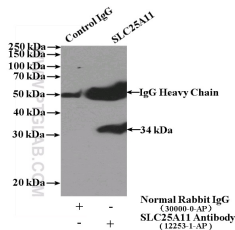
Synonyms:

SLC25A11; OGC, OGCP,

SLC20A4, SLC25A11



HEK-293 cells were subjected to SDS PAGE followed by western blot with 12253-1-AP(SLC25A11 antibody) at dilution of 1:1000



IP Result of anti-SLC25A11 (IP:12253-1-AP, 4ug; Detection:12253-1-AP 1:1000) with HEK-293 cells lysate 1560ug.

Applications

Tested applications:	ELISA, WB, IP
Species specificity:	Human; other species not tested.
Calculated SLC25A11 MW:	314aa,34 kDa
Observed SLC25A11 MW:	30-34 kDa
Positive WB detected in	HEK-293 cells, human kidney tissue
Positive IP detected in	HEK-293 cells
Recommended dilution:	WB: 1:500-1:5000 IP: 1:500-1:5000

Application key: WB = Western blotting, IHC = Immunohistochemistry, IF = Immunofluorescence, IP = Immunoprecipitation

Immunogen information

Immunogen:	Ag2903
GenBank accession number:	BC016294
Gene ID (NCBI):	8402
Full name:	Solute carrier family 25 (mitochondrial carrier; oxoglutarate carrier), member 11

Product information

Purification method:	Antigen affinity purification
Storage:	PBS with 0.1% sodium azide and 50% glycerol pH 7.3. Store at -20°C.