

TBL2 Polyclonal Antibody

Catalog number: 12488-1-AP

Size: 47 µg/150 µl

Source: Rabbit

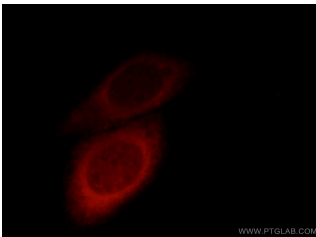
Isotype: IgG

Synonyms:

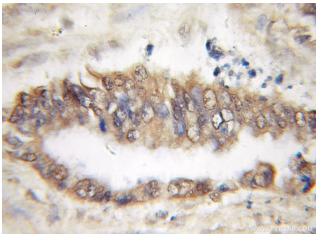
TBL2; DKFZp434N024, TBL2, transducin (beta) like 2,

Transducin beta like protein 2,

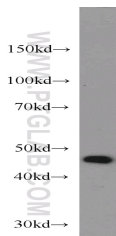
WBSCR13, WS betaTRP



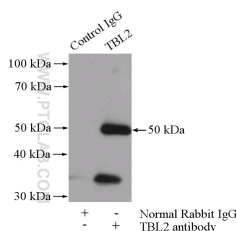
Immunofluorescent analysis of HepG2 cells, using TBL2 antibody 11640-1-AP at 1:25 dilution and Rhodamine-labeled goat anti-rabbit IgG (red).



Immunohistochemical of paraffin-embedded human pancreas cancer using 12488-1-AP (TBL2 antibody) at dilution of 1:50 (under 10x lens)



COLO 320 cells were subjected to SDS PAGE followed by western blot with 12488-1-AP (TBL2 antibody) at dilution of 1:500



IP Result of anti-TBL2

Background

TBL2 belongs to a member of the beta-transducin protein family. This gene is commonly deleted in Williams-Beuren syndrome, a developmental disorder with multi-system manifestations caused by haploinsufficiency for contiguous genes deleted in chromosome region 7q11.23. TBL2 encodes a protein with four putative WD40 repeats, which may be involved in some intracellular signaling pathway.

Applications

Tested applications:	ELISA, WB, IHC, IF, IP
Cited applications:	IF, WB
Species specificity:	Human, Mouse, Rat; other species not tested.
Cited species:	Human
Calculated TBL2 MW:	446aa, 50 kDa
Observed TBL2 MW:	45-50kd
Positive WB detected in	COLO 320 cells, HeLa cells, human placenta tissue, Jurkat cells, mouse pancreas tissue, mouse placenta tissue
Positive IP detected in	COLO 320 cells
Positive IHC detected in	Human pancreas cancer tissue, human heart tissue, human pancreas tissue
Positive IF detected in	HepG2 cells
Recommended dilution:	WB: 1:500-1:5000 IP: 1:200-1:2000 IHC: 1:20-1:200 IF: 1:10-1:100

Application key: WB = Western blotting, IHC = Immunohistochemistry, IF = Immunofluorescence, IP = Immunoprecipitation

Immunogen information

Immunogen:	Ag3200
GenBank accession number:	BC012938
Gene ID (NCBI):	26608
Full name:	Transducin (beta)-like 2

Product information

Purification method:	Antigen affinity purification
Storage:	PBS with 0.1% sodium azide and 50% glycerol pH 7.3. Store at -20°C.

(IP:12488-1-AP, 4ug;
Detection:12488-1-AP 1:800)
with COLO 320 cells lysate
2400ug.