

CDC2L6 Polyclonal Antibody

Catalog number: 13761-1-AP

Size: 20 µg/150 µl

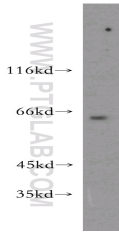
Source: Rabbit

Isotype: IgG

Synonyms:

CDC2L6; CDK11; KIAA1028;

bA346C16.3



mouse eye tissue were subjected to SDS PAGE followed by western blot with 13761-1-AP(CDC2L6 Antibody) at dilution of 1:800

Applications

Tested applications:	ELISA, WB
Species specificity:	Human, mouse, rat; other species not tested.
Positive WB detected in:	Mouse eye tissue
Calculated CDC2L6 MW:	502aa,57kd
Observed CDC2L6 MW:	60-64kd
Recommended dilution:	WB: 1:200-1:2000

Application key: WB = Western blotting, IHC = Immunohistochemistry, IF = Immunofluorescence, IP = Immunoprecipitation, FC = Flow cytometry

Immunogen information

Immunogen:	Ag4731
GenBank accession number:	BC037289
Gene ID (NCBI):	23097
Full name:	Cell division cycle 2-like 6 (CDK8-like)

Product information

Purification method:	Antigen affinity purification
Storage:	PBS with 0.02% sodium azide and 50% glycerol pH 7.3. Store at -20°C.