

WDR1 Polyclonal Antibody

Catalog number: 13676-1-AP

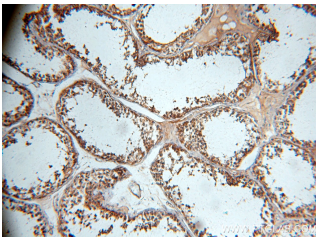
Size: 22 µg/150 µl

Source: Rabbit

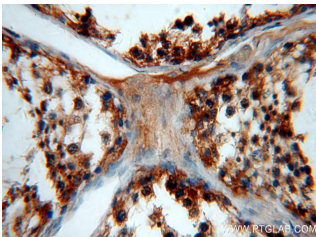
Isotype: IgG

Synonyms:

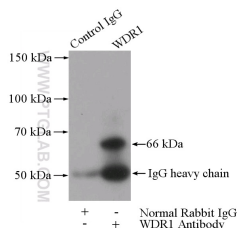
WDR1; Actin interacting protein 1, AIP1, NORI 1, WD repeat containing protein 1, WD repeat domain 1, WDR1



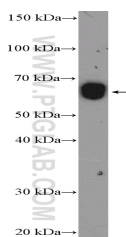
Immunohistochemical of paraffin-embedded human testis using 13676-1-AP(WDR1 antibody) at dilution of 1:100 (under 10x lens)



Immunohistochemical of paraffin-embedded human testis using 13676-1-AP(WDR1 antibody) at dilution of 1:100 (under 40x lens)



IP Result of anti-WDR1 (IP:13676-1-AP, 3µg; Detection:13676-1-AP 1:500) with mouse skeletal muscle tissue lysate 3600ug.



rat skeletal muscle tissue were

Applications

Tested applications:	ELISA, IHC, IP, WB
Cited applications:	WB
Species specificity:	Human, Mouse, Rat; other species not tested.
Cited species:	Mouse
Calculated WDR1 MW:	606aa, 66 kDa
Observed WDR1 MW:	66-70 kDa
Positive WB detected in	Rat skeletal muscle tissue, mouse skeletal muscle tissue
Positive IP detected in	Mouse skeletal muscle tissue
Positive IHC detected in	Human testis tissue
Recommended dilution:	WB: 1:200-1:2000
	IP: 1:200-1:2000
	IHC: 1:20-1:200

Application key: WB = Western blotting, IHC = Immunohistochemistry, IF = Immunofluorescence, IP = Immunoprecipitation

Immunogen information

Immunogen:	Ag4670
GenBank accession number:	BC030541
Gene ID (NCBI):	9948
Full name:	WD repeat domain 1

Product information

Purification method:	Antigen affinity purification
Storage:	PBS with 0.02% sodium azide and 50% glycerol pH 7.3. Store at -20°C.

subjected to SDS PAGE
followed by western blot with
13676-1-AP(WDR1 Antibody)
at dilution of 1:600