

IκB alpha Polyclonal Antibody

Catalog number: 10268-1-AP

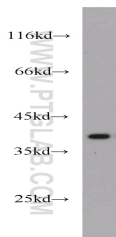
Size: 24 µg/150 µl

Source: Rabbit

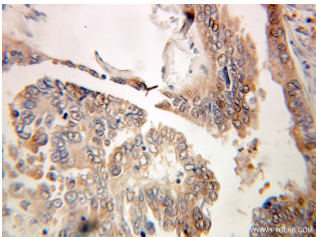
Isotype: IgG

Synonyms:

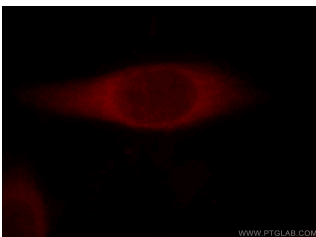
NFKB1A; I kappa B alpha,
IkappaBalpha, IκB alpha, IKBA,
MAD 3, MAD3, NF kappa B
inhibitor alpha, NFKBI, NFKBIA



HeLa cells were subjected to SDS PAGE followed by western blot with 10268-1-AP (NFKBIA antibody) at dilution of 1:500



Immunohistochemical of paraffin-embedded human ovary tumor using 10268-1-AP (NFKBIA antibody) at dilution of 1:100 (under 25x lens)



Immunofluorescent analysis of HeLa cells, using NFKBIA antibody 10268-1-AP at 1:25 dilution and Rhodamine-labeled goat anti-rabbit IgG (red).

Background

Nuclear factor of kappa light polypeptide gene enhancer in B-cells inhibitor, alpha (NFKB1A, synonyms: IKBA, MAD-3, NFKBI). NFKB1 or NFKB2 is bound to REL, RELA, or RELB to form the NFKB complex. The NFKB complex is inhibited by I-kappa-B proteins (NFKBIA or NFKBIB), which inactivate NF-kappa-B by trapping it in the cytoplasm. Phosphorylation of serine residues on the I-kappa-B proteins by kinases (IKBKA, or IKBKB) marks them for destruction via the ubiquitination pathway, thereby allowing activation of the NF-kappa-B complex. Activated NFKB complex translocates into the nucleus and binds DNA at kappa-B-binding motifs such as 5-prime GGGRNNYCC 3-prime or 5-prime HGGARNYCC 3-prime.

Applications

Tested applications:	ELISA, IHC, IF, WB, FC, IP
Cited applications:	WB
Species specificity:	Human, Mouse, Rat, Pig; other species not tested.
Cited species:	Human, mouse, rat
Calculated IκB alpha MW:	39 kDa
Observed IκB alpha MW:	36-40 kDa
Positive WB detected in	HeLa cells, A431 cells, HEK-293 cells, HL-60 cells, Jurkat cells, mouse liver tissue, NIH/3T3 cells, pig liver tissue
Positive IP detected in	HeLa cells
Positive IHC detected in	Human ovary tumor tissue, human prostate cancer tissue
Positive IF detected in	HeLa cells
Positive FC detected in	HeLa cells, NIH/3T3 cells
Recommended dilution:	WB: 1:200-1:2000 IP: 1:500-1:5000 IHC: 1:20-1:200 IF: 1:10-1:100 FC: N/A

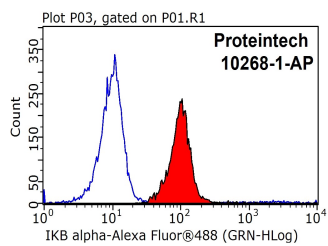
Application key: WB = Western blotting, IHC = Immunohistochemistry, IF = Immunofluorescence, IP = Immunoprecipitation

Immunogen information

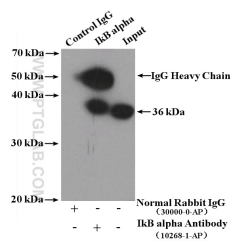
Immunogen:	Ag0345
GenBank accession number:	BC002601
Gene ID (NCBI):	4792
Full name:	Nuclear factor of kappa light polypeptide gene enhancer in B-cells inhibitor, alpha

Product information

Purification method:	Antigen affinity purification
Storage:	PBS with 0.1% sodium azide and 50% glycerol pH 7.3. Store at -20°C.



1X10⁶ HeLa cells were stained with 0.2ug NFKBIA antibody (10268-1-AP, red) and control antibody (blue). Fixed with 90% MeOH blocked with 3% BSA (30 min). Alexa Fluor 488-conjugated AffiniPure Goat Anti-Rabbit IgG(H+L) with dilution 1:1000.



IP Result of anti-NFKBIA (IP:10268-1-AP, 4ug; Detection:10268-1-AP 1:1000) with HeLa cells lysate 4000ug.