

MAP4 Polyclonal Antibody

Catalog number: 11229-1-AP

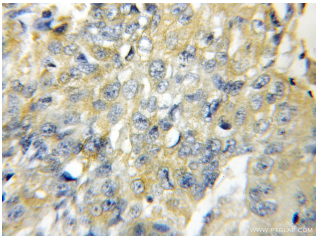
Size: 60 µg/150 µl

Source: Rabbit

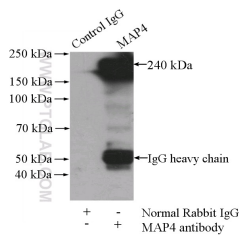
Isotype: IgG

Synonyms:

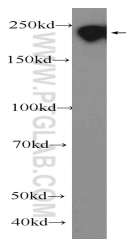
MAP4; DKFZp779A1753, MAP4, MAP4



Immunohistochemical of paraffin-embedded human lung cancer using 11229-1-AP (MAP4 antibody) at dilution of 1:50 (under 10x lens)



IP Result of anti-MAP4 (IP:11229-1-AP, 4µg; Detection:11229-1-AP 1:1000) with HEK-293 cells lysate 1200µg.



HEK-293 cells were subjected to SDS PAGE followed by western blot with 11229-1-AP (MAP4 Antibody) at dilution of 1:600

Applications

Tested applications:	ELISA, IHC, WB, IP
Cited applications:	IHC
Species specificity:	Human, Mouse, Rat; other species not tested.
Cited species:	Human
Calculated MAP4 MW:	121 kDa
Observed MAP4 MW:	210 kDa
Positive WB detected in:	HEK-293 cells, HeLa cells
Positive IP detected in:	HEK-293 cells
Positive IHC detected in:	Human lung cancer tissue
Recommended dilution:	WB: 1:200-1:2000
	IP: 1:500-1:5000
	IHC: 1:20-1:200

Application key: WB = Western blotting, IHC = Immunohistochemistry, IF = Immunofluorescence, IP = Immunoprecipitation

Immunogen information

Immunogen:	Ag1741
GenBank accession number:	BC012794
Gene ID (NCBI):	4134
Full name:	Microtubule-associated protein 4

Product information

Purification method:	Antigen affinity purification
Storage:	PBS with 0.1% sodium azide and 50% glycerol pH 7.3. Store at -20°C.