

Kallikrein 2 Polyclonal Antibody

Catalog number: 10812-1-AP

Size: 38 µg/150 µl

Source: Rabbit

Isotype: IgG

Synonyms:

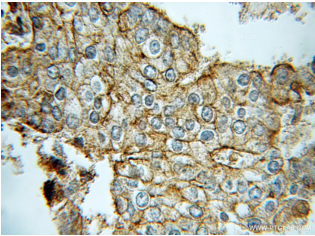
KLK2; Glandular kallikrein 1,

hGK 1, hK2, Kallikrein 2,

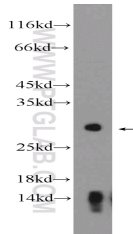
kallikrein related peptidase 2,

KLK2, KLK2A2, Tissue kallikrein

2



Immunohistochemical of paraffin-embedded human prostate cancer using 10812-1-AP (KLK2 antibody) at dilution of 1:100 (under 10x lens)



mouse pancreas tissue were subjected to SDS PAGE followed by western blot with 10812-1-AP (KLK2 Antibody) at dilution of 1:300

Background

KLK2 (Kallikrein-2) is also named as hGK-1 and belongs to the Kallikrein subfamily. It plays a role in prostate cancer susceptibility and this role may be realized at least in part by the induction of increases in its production. It also may mediate tumor growth and invasion by participating in proteolytic cascades. This protein has 4 isoforms produced by alternative splicing with the molecular weight of 29 kDa, 25 kDa, 18 kDa and 17 kDa.

Applications

Tested applications:	ELISA, IHC, WB
Species specificity:	Human, Mouse; other species not tested.
Calculated Kallikrein 2 MW:	28 kDa
Observed Kallikrein 2 MW:	29 kDa
Positive WB detected in	Mouse pancreas tissue
Positive IHC detected in	Human prostate cancer tissue
Recommended dilution:	WB: 1:200-1:1000 IHC: 1:20-1:200

Application key: WB = Western blotting, IHC = Immunohistochemistry, IF = Immunofluorescence, IP = Immunoprecipitation

Immunogen information

Immunogen:	Ag1077
GenBank accession number:	BC005196
Gene ID (NCBI):	3817
Full name:	Kallikrein-related peptidase 2

Product information

Purification method:	Antigen affinity purification
Storage:	PBS with 0.1% sodium azide and 50% glycerol pH 7.3. Store at -20°C.