

MINK1 Polyclonal Antibody

Catalog number: 13137-1-AP

Size: 21 µg/150 µl

Source: Rabbit

Isotype: IgG

Synonyms:

MINK1; B55, GCK family kinase

MiNK, hMINK, hMINKbeta,

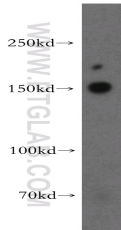
MAP4K6, MEK kinase kinase 6,

MEKKK 6, MINK, MINK1,

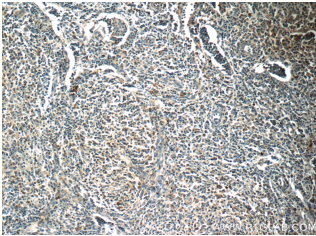
Misshapen like kinase 1,

Misshapen/NIK related kinase,

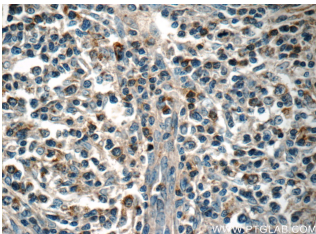
YSK2, ZC3



mouse brain tissue were subjected to SDS PAGE followed by western blot with 13137-1-AP(MINK1 antibody) at dilution of 1:300



Immunohistochemistry of paraffin-embedded human lymphoma tissue slide using 13137-1-AP(MINK1 Antibody) at dilution of 1:50 (under 10x lens)



Immunohistochemistry of paraffin-embedded human lymphoma tissue slide using 13137-1-AP(MINK1 Antibody) at dilution of 1:50 (under 40x lens)

Applications

Tested applications:	ELISA, WB, IHC, IP
Species specificity:	Human, Mouse, Rat; other species not tested.
Calculated MINK1 MW:	1332aa, 150 kDa
Observed MINK1 MW:	150 kDa
Positive WB detected in	Mouse brain tissue
Positive IP detected in	Mouse brain tissue
Positive IHC detected in	Human lymphoma tissue, human skeletal muscle tissue, mouse brain tissue
Recommended dilution:	WB: 1:500-1:5000 IP: 1:200-1:1000 IHC: 1:20-1:200

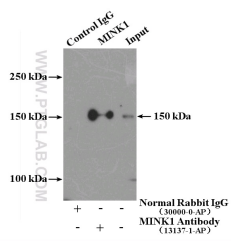
Application key: WB = Western blotting, IHC = Immunohistochemistry, IF = Immunofluorescence, IP = Immunoprecipitation

Immunogen information

Immunogen:	Ag3795
GenBank accession number:	BC034673
Gene ID (NCBI):	50488
Full name:	Misshapen-like kinase 1 (zebrafish)

Product information

Purification method:	Antigen affinity purification
Storage:	PBS with 0.02% sodium azide and 50% glycerol pH 7.3. Store at -20°C.



IP Result of anti-MINK1
(IP:13137-1-AP, 4ug;
Detection:13137-1-AP 1:300)
with mouse brain tissue lysate
4000ug.