

## GCLC Polyclonal Antibody

Catalog number: 12601-1-AP

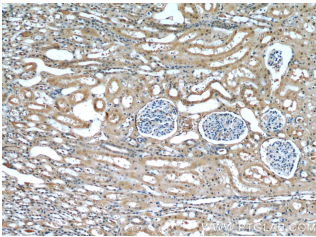
Size: 33 µg/150 µl

Source: Rabbit

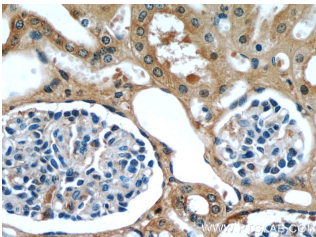
Isotype: IgG

Synonyms:

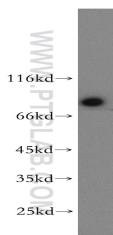
GCLC; Gamma ECS, GCLC, GCS,  
GCS heavy chain, GLCL, GLCLC



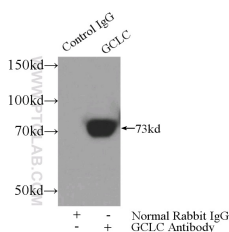
Immunohistochemical of paraffin-embedded human kidney using 12601-1-AP(GCLC antibody) at dilution of 1:50 (under 10x lens)



Immunohistochemical of paraffin-embedded human kidney using 12601-1-AP(GCLC antibody) at dilution of 1:50 (under 40x lens)



Jurkat cells were subjected to SDS PAGE followed by western blot with 12601-1-AP(GCLC antibody) at dilution of 1:200



### IP Result of anti-GCLC

(IP:12601-1-AP, 3µg;

Detection:12601-1-AP 1:500)

### Background

GCLC (Glutamate--cysteine ligase catalytic subunit) belongs to the glutamate--cysteine ligase type 3 family. It is also named as GLCL, GLCLC. It is the first rate-limiting enzyme in glutathione (GSH) biosynthesis. GCLC gene may be associated with coronary endothelial vasomotor dysfunction and myocardial infarction (MI) (PMID:12598062). Defects in GCLC are the cause of hemolytic anemia (HAGGSD).

### Applications

Tested applications:	ELISA, WB, IHC, IP
Cited applications:	WB
Species specificity:	Human, Mouse, Rat; other species not tested.
Cited species:	Human, mouse
Calculated GCLC MW:	637aa, 73 kDa
Observed GCLC MW:	73kd
Positive WB detected in	Jurkat cells, HEK-293 cells, L02 cells, mouse kidney tissue, mouse lung tissue
Positive IP detected in	Mouse kidney tissue
Positive IHC detected in	Human kidney tissue
Recommended dilution:	WB: 1:200-1:2000 IP: 1:200-1:2000 IHC: 1:20-1:200

Application key: WB = Western blotting, IHC = Immunohistochemistry, IF = Immunofluorescence, IP = Immunoprecipitation

### Immunogen information

Immunogen:	Ag3252
GenBank accession number:	BC022487
Gene ID (NCBI):	2729
Full name:	Glutamate-cysteine ligase, catalytic subunit

### Product information

Purification method:	Antigen affinity purification
Storage:	PBS with 0.02% sodium azide and 50% glycerol pH 7.3. Store at -20°C.

with mouse kidney tissue  
lysate 4000ug.