

ENTPD6 Polyclonal Antibody

Catalog number: 11626-1-AP

Size: 41 µg/150 µl

Source: Rabbit

Isotype: IgG

Synonyms:

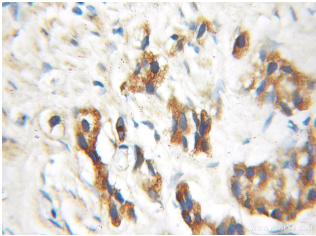
ENTPD6; CD39 antigen like 2,

CD39L2, dJ738P15.3,

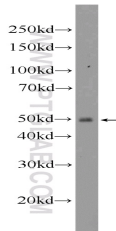
DKFZp781G2277,

DKFZp781K21102, ENTPD6,

FLJ36711, NTPDase 6



Immunohistochemical of paraffin-embedded human prostate cancer using 11626-1-AP (ENTPD6 antibody) at dilution of 1:100 (under 10x lens)



mouse spleen tissue were subjected to SDS PAGE followed by western blot with 11626-1-AP (ENTPD6 Antibody) at dilution of 1:600

Applications

Tested applications:	ELISA, IHC, WB
Species specificity:	Human, Mouse, Rat; other species not tested.
Calculated ENTPD6 MW:	483aa, 53 kDa
Observed ENTPD6 MW:	60 kDa
Positive WB detected in	Mouse spleen tissue
Positive IHC detected in	Human prostate cancer tissue
Recommended dilution:	WB: 1:200-1:2000 IHC: 1:20-1:200

Application key: WB = Western blotting, IHC = Immunohistochemistry, IF = Immunofluorescence, IP = Immunoprecipitation

Immunogen information

Immunogen:	Ag2148
GenBank accession number:	BC025980
Gene ID (NCBI):	955
Full name:	Ectonucleoside triphosphate diphosphohydrolase 6 (putative function)

Product information

Purification method:	Antigen affinity purification
Storage:	PBS with 0.1% sodium azide and 50% glycerol pH 7.3. Store at -20°C.