

## IFT57 Polyclonal Antibody

Catalog number: 11083-1-AP

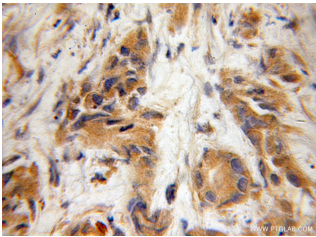
Size: 52 µg/150 µl

Source: Rabbit

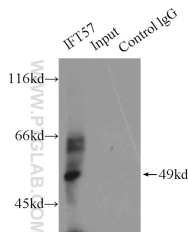
Isotype: IgG

Synonyms:

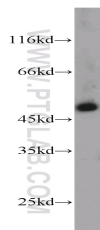
IFT57; DERP8, ESRRBL1, FLJ10147, HIP1 interacting protein, HIPPI, IFT57, MHS4R2



Immunohistochemical of paraffin-embedded human prostate cancer using 11083-1-AP (IFT57 antibody) at dilution of 1:50 (under 10x lens)



IP Result of anti-IFT57 (IP:11083-1-AP, 5µg; Detection:11083-1-AP 1:800) with HEK-293 cells lysate 2000µg.



mouse retina tissue were subjected to SDS PAGE followed by western blot with 11083-1-AP (IFT57 antibody) at dilution of 1:1000

### Background

IFT57, also named as DERP8, ESRRBL1, HIPPI and MHS4R2, belongs to the IFT57 family. It is required for the formation of cilia. IFT57 plays an indirect role in sonic hedgehog signaling, cilia being required for all activity of the hedgehog pathway. It is a component of IFT complex B which composed of IFT88, IFT57, TRAF3IP1, IFT52, IFT27, HSPB11 and IFT20. In contrast to BBS proteins, IFT57 and IFT88 is found in almost every cilium. (PMID:22072986)

### Applications

Tested applications:	ELISA, WB, IHC, IP
Cited applications:	IP, WB
Species specificity:	Human, Mouse, Rat; other species not tested.
Cited species:	Mouse
Calculated IFT57 MW:	49kd
Observed IFT57 MW:	49kd
Positive WB detected in	Mouse retina tissue, HEK-293 cells
Positive IP detected in	HEK-293 cells
Positive IHC detected in	Human prostate cancer tissue, human pancreas tissue
Recommended dilution:	WB: 1:400 - 1:1600
	IP: 1:400 - 1:1600
	IHC: 1:25 - 1:100

Application key: WB = Western blotting, IHC = Immunohistochemistry, IF = Immunofluorescence, IP = Immunoprecipitation

### Immunogen information

Immunogen:	Ag1566
GenBank accession number:	BC011899
Gene ID (NCBI):	55081
Full name:	Intraflagellar transport 57 homolog (Chlamydomonas)

### Product information

Purification method:	Antigen affinity purification
Storage:	PBS with 0.1% sodium azide and 50% glycerol pH 7.3. Store at -20°C.