

Cofilin Polyclonal Antibody

Catalog number: 10960-1-AP

Size: 55 µg/150 µl

Source: Rabbit

Isotype: IgG

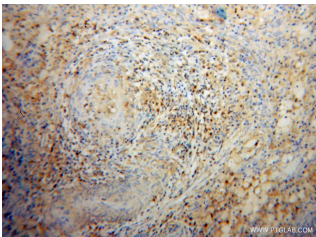
Synonyms:

CFL1; 18 kDa phosphoprotein,

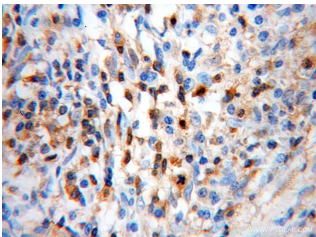
CFL, CFL1, Cofilin 1, cofilin 1

(non muscle), Cofilin, non

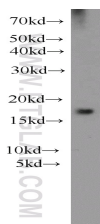
muscle isoform, p18



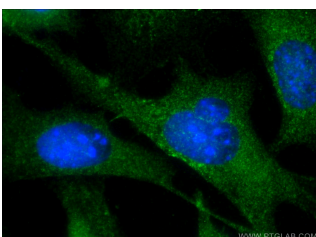
Immunohistochemical of paraffin-embedded human cervical cancer using 10960-1-AP (CFL1 antibody) at dilution of 1:50 (under 10x lens)



Immunohistochemical of paraffin-embedded human cervical cancer using 10960-1-AP (CFL1 antibody) at dilution of 1:50 (under 40x lens)



mouse brain tissue were subjected to SDS PAGE followed by western blot with 10960-1-AP (CFL1 antibody) at dilution of 1:1000



Immunofluorescent analysis

Background

Cofilin is a ubiquitous actin-binding protein required for the reorganization of actin filaments. It is a member of ADF (actin-depolymerizing factor)/cofilin family that is a key regulator of actin dynamics and essential for cellular motility, cytokinesis, and endocytosis. Cofilin activity is tightly regulated by phosphorylation and dephosphorylation. Phosphorylation at Ser3 can inhibit its activity, also causing translocation from the nucleus to the cytoplasm.

Applications

Tested applications:	ELISA, WB, IHC, IF
Cited applications:	IF, IHC, WB
Species specificity:	Human, Mouse, Rat; other species not tested.
Cited species:	Human
Calculated Cofilin MW:	18 kDa
Observed Cofilin MW:	18 kDa
Positive WB detected in	Mouse brain tissue, human brain tissue, human skin tissue, MCF7 cells, NIH/3T3 cells, rat brain tissue
Positive IHC detected in	Human cervical cancer tissue, human heart tissue, human lung cancer tissue
Positive IF detected in	NIH/3T3 cells
Recommended dilution:	WB: 1:200-1:2000 IHC: 1:20-1:200 IF: 1:20-1:200

Application key: WB = Western blotting, IHC = Immunohistochemistry, IF = Immunofluorescence, IP = Immunoprecipitation

Immunogen information

Immunogen:	Ag1399
GenBank accession number:	BC012318
Gene ID (NCBI):	1072
Full name:	Cofilin 1 (non-muscle)

Product information

Purification method:	Antigen affinity purification
Storage:	PBS with 0.1% sodium azide and 50% glycerol pH 7.3. Store at -20°C.

of (-20% Ethanol) fixed
NIH/3T3 cells using 10960-1-
AP(Cofilin Antibody) at
dilution of 1:50 and Alexa
Fluor 488-conjugated
AffiniPure Goat Anti-Rabbit
IgG(H+L)