

## MGP Polyclonal Antibody

Catalog number: 10734-1-AP

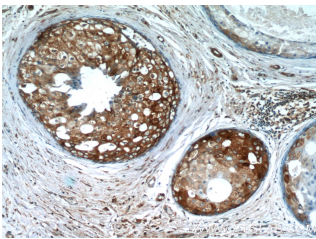
Size: 20 µg/150 µl

Source: Rabbit

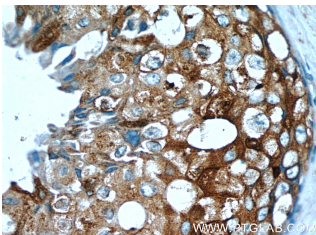
Isotype: IgG

Synonyms:

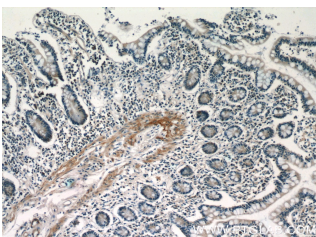
MGP; GIG36, matrix Gla protein, MGLAP, MGP, NTI



Immunohistochemistry of paraffin-embedded human breast cancer tissue slide using 10734-1-AP (MGP Antibody) at dilution of 1:50 (under 10x lens)



Immunohistochemistry of paraffin-embedded human breast cancer tissue slide using 10734-1-AP (MGP Antibody) at dilution of 1:50 (under 40x lens)



Immunohistochemistry of paraffin-embedded human small intestine tissue slide using 10734-1-AP (MGP Antibody) at dilution of 1:50 (under 10x lens)

### Background

Matrix Gla protein (MGP), a vitamin K-dependent protein, is recognized as a calcification inhibitor in vascular tissue. Defects in MGP are the cause of Keutel syndrome (KS), which is an autosomal recessive disorder characterized by abnormal cartilage calcification, peripheral pulmonary stenosis neural hearing loss and midfacial hypoplasia.

### Applications

Tested applications:	ELISA, IHC
Cited applications:	IHC, WB
Species specificity:	Human, Mouse, Rat; other species not tested.
Cited species:	Human, mouse
Calculated MGP MW:	103aa, 13kd
Observed MGP MW:	
Positive IHC detected in	Human breast cancer tissue, human small intestine tissue
Recommended dilution:	IHC: 1:20-1:200

Application key: WB = Western blotting, IHC = Immunohistochemistry, IF = Immunofluorescence, IP = Immunoprecipitation

### Immunogen information

Immunogen:	Ag1091
GenBank accession number:	BC005272
Gene ID (NCBI):	4256
Full name:	Matrix Gla protein

### Product information

Purification method:	Antigen affinity purification
Storage:	PBS with 0.1% sodium azide and 50% glycerol pH 7.3. Store at -20°C.