

Lactoferrin Polyclonal Antibody

Catalog number: 10933-1-AP

Size: 46 µg/150 µl

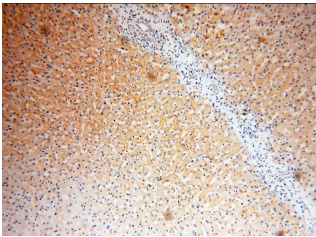
Source: Rabbit

Isotype: IgG

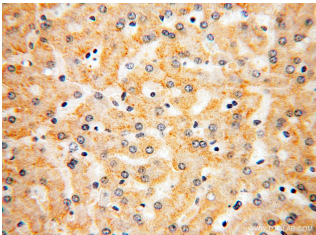
Synonyms:

LTF; GIG12, HLF2, Lactoferrin,
lactotransferrin, LF, LTF,

Talalactoferrin



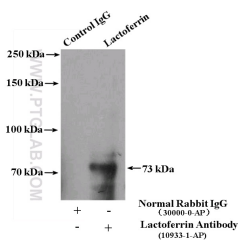
Immunohistochemical of paraffin-embedded human liver using 10933-1-AP (LTF antibody) at dilution of 1:50 (under 10x lens)



Immunohistochemical of paraffin-embedded human liver using 10933-1-AP (LTF antibody) at dilution of 1:50 (under 40x lens)



HEK-293 cells were subjected to SDS PAGE followed by western blot with 10933-1-AP (LTF antibody) at dilution of 1:500



IP Result of anti-LTF

(IP:10933-1-AP, 4µg;

Background

LTF (Lactotransferrin) is also named as GIG12, LF and belongs to the transferrin family. It is an iron binding transport protein which can bind two atoms of ferric iron in association with the binding of an anion, usually bicarbonate. LTF is also an important protein component of the innate immune system that is broadly distributed within the body fluids. It can contribute to the activation of both the innate and adaptive immune responses by promoting the recruitment of leukocytes and activation of dendritic cells (PMID:18453607). This protein has 2 isoforms produced by alternative promoter usage. The human LTF can be isolated two fragments, an N-terminal tryptic fragment having an Mr of 30 kDa and a C-terminal tryptic fragment having an Mr of 50 kDa by a mild tryptic digest (PMID:3790094).

Applications

Tested applications:	ELISA, IHC, WB, IP
Species specificity:	Human; other species not tested.
Calculated Lactoferrin MW:	80 kDa
Observed Lactoferrin MW:	51 kDa
Positive WB detected in	HEK-293 cells, human pancreas tissue
Positive IP detected in	HeLa cells
Positive IHC detected in	Human liver tissue, human prostate hyperplasia tissue
Recommended dilution:	WB: 1:200-1:2000 IP: 1:200-1:2000 IHC: 1:20-1:200

Application key: WB = Western blotting, IHC = Immunohistochemistry, IF = Immunofluorescence, IP = Immunoprecipitation

Immunogen information

Immunogen:	Ag1379
GenBank accession number:	BC015822
Gene ID (NCBI):	4057
Full name:	Lactotransferrin

Product information

Purification method:	Antigen affinity purification
Storage:	PBS with 0.1% sodium azide and 50% glycerol pH 7.3. Store at -20°C.

Detection:10933-1-AP 1:600)
with HeLa cells lysate 4000ug.