

## TFE3 Polyclonal Antibody

Catalog number: 14480-1-AP

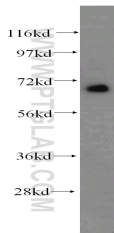
Size: 38 µg/150 µl

Source: Rabbit

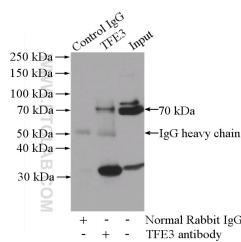
Isotype: IgG

Synonyms:

TFE3; bHLHe33, RCCP2, TFE3, TFEA, Transcription factor E3



K-562 cells were subjected to SDS PAGE followed by western blot with 14480-1-AP(TFE3 antibody) at dilution of 1:500



IP Result of anti-TFE3 (IP:14480-1-AP, 4ug; Detection:14480-1-AP 1:500) with K-562 cells lysate 1200ug.

### Applications

Tested applications:	ELISA, WB, IP
Species specificity:	Human, Mouse, Rat; other species not tested.
Calculated TFE3 MW:	62 kDa
Observed TFE3 MW:	70 kDa
Positive WB detected in	K-562 cells, human brain tissue, mouse spleen tissue, rat brain tissue
Positive IP detected in	K-562 cells
Recommended dilution:	WB: 1:500-1:5000 IP: 1:200-1:2000

Application key: WB = Western blotting, IHC = Immunohistochemistry, IF = Immunofluorescence, IP = Immunoprecipitation

### Immunogen information

Immunogen:	Ag5863
GenBank accession number:	BC026027
Gene ID (NCBI):	7030
Full name:	Transcription factor binding to IGHM enhancer 3

### Product information

Purification method:	Antigen affinity purification
Storage:	PBS with 0.02% sodium azide and 50% glycerol pH 7.3. Store at -20°C.