

PPM1B Polyclonal Antibody

Catalog number: 13193-1-AP

Size: 49 µg/150 µl

Source: Rabbit

Isotype: IgG

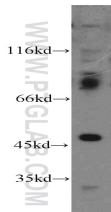
Synonyms:

PPM1B; PP2C beta, PP2C beta

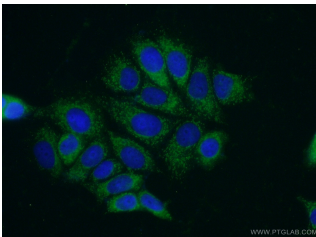
X, PP2CB, PP2CBETA,

PPC2BETAX, PPM1B, Protein

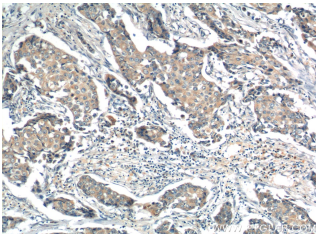
phosphatase 1B



MCF7 cells were subjected to SDS PAGE followed by western blot with 13193-1-AP(PPM1B antibody) at dilution of 1:400



Immunofluorescent analysis of (-20 Ethanol) fixed MCF-7 cells using 13193-1-AP(PPM1B Antibody) at dilution of 1:50 and Alexa Fluor 488-conjugated AffiniPure Goat Anti-Rabbit IgG(H+L)



Immunohistochemistry of paraffin-embedded human breast cancer tissue slide using 13193-1-AP(PPM1B Antibody) at dilution of 1:200 (under 10x lens)

Applications

Tested applications:	ELISA, WB, IHC, IF
Species specificity:	Human, Mouse, Rat; other species not tested.
Calculated PPM1B MW:	479aa, 53 kDa
Observed PPM1B MW:	50-53 kDa
Positive WB detected in	MCF7 cells
Positive IHC detected in	Human breast cancer tissue, human skeletal muscle tissue
Positive IF detected in	MCF-7 cells
Recommended dilution:	WB: 1:200-1:2000
	IHC: 1:20-1:200
	IF: 1:50-1:500

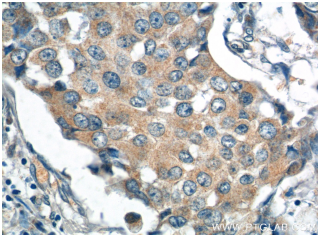
Application key: WB = Western blotting, IHC = Immunohistochemistry, IF = Immunofluorescence, IP = Immunoprecipitation

Immunogen information

Immunogen:	Ag3871
GenBank accession number:	BC012002
Gene ID (NCBI):	5495
Full name:	Protein phosphatase 1B (formerly 2C), magnesium-dependent, beta isoform

Product information

Purification method:	Antigen affinity purification
Storage:	PBS with 0.02% sodium azide and 50% glycerol pH 7.3. Store at -20°C.



**Immunohistochemistry of
paraffin-embedded human
breast cancer tissue slide
using 13193-1-AP (PPM1B
Antibody) at dilution of 1:200
(under 40x lens)**