

PHC2 Polyclonal Antibody

Catalog number: 12867-1-AP

Size: 27 µg/150 µl

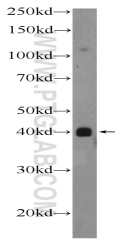
Source: Rabbit

Isotype: IgG

Synonyms:

PHC2; EDR2, HPH2, PH2, PHC2,

Polyhomeotic like protein 2



A375 cells were subjected to SDS PAGE followed by western blot with 12867-1-AP (PHC2 Antibody) at dilution of 1:600

Applications

| | |
|--------------------------|--|
| Tested applications: | ELISA, WB |
| Species specificity: | Human, Mouse, Rat; other species not tested. |
| Calculated PHC2 MW: | 858aa, 91 kDa |
| Observed PHC2 MW: | 40 kDa |
| Positive WB detected in: | A375 cells, A549 cells |
| Recommended dilution: | WB: 1:200-1:2000 |

Application key: WB = Western blotting, IHC = Immunohistochemistry, IF = Immunofluorescence, IP = Immunoprecipitation

Immunogen information

| | |
|---------------------------|-------------------------------------|
| Immunogen: | Ag3507 |
| GenBank accession number: | BC028396 |
| Gene ID (NCBI): | 1912 |
| Full name: | Polyhomeotic homolog 2 (Drosophila) |

Product information

| | |
|----------------------|---|
| Purification method: | Antigen affinity purification |
| Storage: | PBS with 0.1% sodium azide and 50% glycerol pH 7.3. Store at -20°C. |