

## CYP4A11 Polyclonal Antibody

Catalog number: 11688-1-AP

Size: 42 µg/150 µl

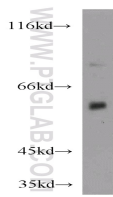
Source: Rabbit

Isotype: IgG

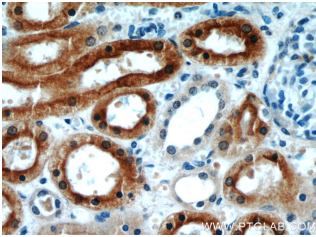
Synonyms:

CYP4A11; CP4Y; CYP4A2;

CYP4A11



mouse kidney tissue were subjected to SDS PAGE followed by western blot with 11688-1-AP(CYP4A11 Antibody) at dilution of 1:500



Immunohistochemistry of paraffin-embedded human kidney using 11688-1-AP(CYP4A11 Antibody) at Dilution 1:50 (under 40x lens)

### Applications

Tested applications:	ELISA, WB, IHC
Species specificity:	Human, mouse, rat; other species not tested.
Positive WB detected in:	Mouse kidney tissue, rat kidney tissue
Calculated CYP4A11 MW:	519aa,59kd
Observed CYP4A11 MW:	59kd
Positive IHC detected in:	Human kidney
Recommended dilution:	WB: 1:200-1:2000 IHC: 1:20-1:200

Application key: WB = Western blotting, IHC = Immunohistochemistry, IF = Immunofluorescence, IP = Immunoprecipitation, FC = Flow cytometry

### Immunogen information

Immunogen:	Ag2300
GenBank accession number:	BC022851
Gene ID (NCBI):	1579
Full name:	Cytochrome P450, family 4, subfamily A, polypeptide 11

### Product information

Purification method:	Antigen affinity purification
Storage:	PBS with 0.1% sodium azide and 50% glycerol pH 7.3. Store at -20°C.