

EAF1 Polyclonal Antibody

Catalog number: 13787-1-AP

Size: 20 µg/150 µl

Source: Rabbit

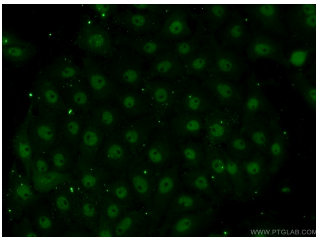
Isotype: IgG

Synonyms:

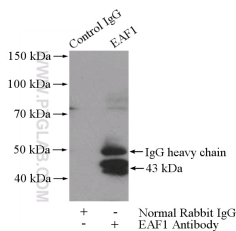
EAF1; EAF1, ELL associated factor 1



K-562 cells were subjected to SDS PAGE followed by western blot with 13787-1-AP(EAF1 antibody) at dilution of 1:500



Immunofluorescent analysis of SH-SY5Y cells using 13787-1-AP(EAF1 Antibody) at dilution of 1:50 and Alexa Fluor 488-conjugated AffiniPure Goat Anti-Rabbit IgG(H+L)



IP Result of anti-EAF1 (IP:13787-1-AP, 4ug; Detection:13787-1-AP 1:500) with HeLa cells lysate 1200ug.

Background

ELL associated factor 1 and ELL associated factor 2 (EAF1/2 factors) are reported to play important roles in tumor suppression and embryogenesis. The tumor suppressor EAF2 is regulated by androgen signaling and associated with prostate cancer. Eaf factors have been revealed to modulate mesoderm and neural patterning by inhibiting canonical Wnt signaling, and high activity of canonical Wnt/ β -catenin is revealed in eafs morphants (PMID: 23364330). Catalog#13787-1-AP is a rabbit polyclonal antibody raised against the full-length of human EAF1.

Applications

Tested applications:	ELISA, WB, IP, IF
Cited applications:	WB
Species specificity:	Human, Mouse, Rat; other species not tested.
Cited species:	Human
Calculated EAF1 MW:	268aa, 29 kDa
Observed EAF1 MW:	43 kDa
Positive WB detected in	K-562 cells, HeLa cells, mouse brain tissue
Positive IP detected in	HeLa cells
Positive IF detected in	SH-SY5Y cells
Recommended dilution:	WB: 1:200-1:2000 IP: 1:200-1:2000 IF: 1:20-1:200

Application key: WB = Western blotting, IHC = Immunohistochemistry, IF = Immunofluorescence, IP = Immunoprecipitation

Immunogen information

Immunogen:	Ag4804
GenBank accession number:	BC041329
Gene ID (NCBI):	85403
Full name:	ELL associated factor 1

Product information

Purification method:	Antigen affinity purification
Storage:	PBS with 0.02% sodium azide and 50% glycerol pH 7.3. Store at -20°C.