

MYCBP Polyclonal Antibody

Catalog number: 12022-1-AP

Size: 41 µg/150 µl

Source: Rabbit

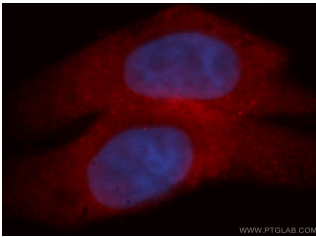
Isotype: IgG

Synonyms:

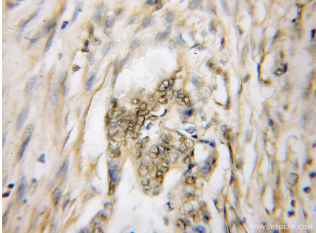
MYCBP; AMY 1, AMY1,

Associate of Myc 1, c myc

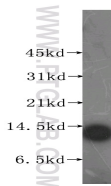
binding protein, MYCBP



Immunofluorescent analysis of HepG2 cells, using MYCBP antibody 12022-1-AP at 1:50 dilution and Rhodamine-labeled goat anti-rabbit IgG (red). Blue pseudocolor = DAPI (fluorescent DNA dye).



Immunohistochemical of paraffin-embedded human pancreas cancer using 12022-1-AP (MYCBP antibody) at dilution of 1:50 (under 10x lens)



human heart tissue were subjected to SDS PAGE followed by western blot with 12022-1-AP (MYCBP antibody) at dilution of 1:500

Background

MYC binding protein (MYCBP), encoded by MYCBP gene, binds to N-terminal region of MYC, and then MYC can activate E box-dependent transcription. Upon increasing expression of MYC, MYCBP translocates into the nucleus in the S phase of the cell cycle. MYCBP may involve in spermatogenesis, since it's found to be interacted with AKAP84/149 in the mitochondria in somatic cells and sperm. It highly expressed in heart, placenta, pancreas, skeletal muscle and kidney, but low in lung. This is a rabbit polyclonal antibody raised against full-length MYCBP of human origin.

Applications

Tested applications:	ELISA, WB, IHC, IF
Species specificity:	Human, Mouse, Rat; other species not tested.
Calculated MYCBP MW:	103aa, 12 kDa
Observed MYCBP MW:	12kd
Positive WB detected in	Human heart tissue, human kidney tissue, human lung tissue, human placenta tissue
Positive IHC detected in	Human pancreas cancer tissue
Positive IF detected in	HepG2 cells
Recommended dilution:	WB: 1:500-1:5000 IHC: 1:20-1:200 IF: 1:20-1:200

Application key: WB = Western blotting, IHC = Immunohistochemistry, IF = Immunofluorescence, IP = Immunoprecipitation

Immunogen information

Immunogen:	Ag2651
GenBank accession number:	BC008686
Gene ID (NCBI):	26292
Full name:	C-myc binding protein

Product information

Purification method:	Antigen affinity purification
Storage:	PBS with 0.1% sodium azide and 50% glycerol pH 7.3. Store at -20°C.