

MACF1 Polyclonal Antibody

Catalog number: 13058-1-AP

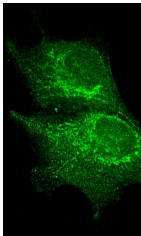
Size: 35 µg/150 µl

Source: Rabbit

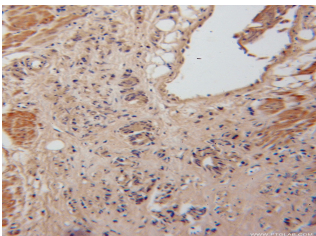
Isotype: IgG

Synonyms:

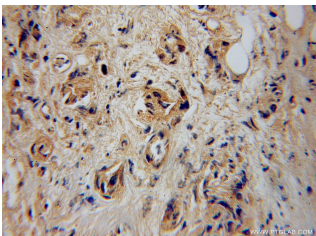
MACF1; 620 kDa actin binding protein, ABP620, ACF7, FLJ45612, FLJ46776, KIAA0465, KIAA1251, MACF, MACF1, Macrophin 1, OFC4, Trabeculin alpha



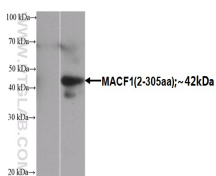
IF results (golgi stain) of MACF1 antibody (1:100) with RPE cells (fixed with 4% formaldehyde) by O'Neil Wiggan, Colorado State Univ.



Immunohistochemical of paraffin-embedded human prostate cancer using 13058-1-AP (MACF1 antibody) at dilution of 1:100 (under 10x lens)



Immunohistochemical of paraffin-embedded human prostate cancer using 13058-1-AP (MACF1 antibody) at dilution of 1:100 (under 40x lens)



- + Overexpression of MACF1
+ + Rabbit Anti human MACF1 polyclonal antibody

Background

MACF1, also called ACF7 (actin crosslinking family 7), is a member of the spectraplaklin family and is a ubiquitously expressed 614 kDa protein. This protein facilitates actin-microtubule interactions at the cell periphery and couples the microtubule network to cellular junctions. It displays a conserved role in membrane protrusion formation during evolution. The two major MACF1 isoforms characterized to date, MACF1a and MACF1b, result from alternative splicing. Both proteins contain N-terminal actin-binding domains (ABD), followed by plakin domains, extended spectrin repeat domains, EF-hand motifs, and C-terminal microtubule-binding domains (MTBDs). MACF1 is expressed in numerous tissue, including the skin, brain, skeletal muscle, and heart.

Applications

Tested applications:	ELISA, IHC, IF, WB
Species specificity:	Human, Mouse, Rat; other species not tested.
Calculated MACF1 MW:	5430aa, 620 kDa
Observed MACF1 MW:	
Positive WB detected in	Transfected HEK-293 cells
Positive IHC detected in	Human prostate cancer tissue, human heart tissue, human skeletal muscle tissue
Positive IF detected in	RPE cells, NIH/3T3 cells
Recommended dilution:	WB: 1:500-1:5000 IHC: 1:20-1:200 IF: N/A

Application key: WB = Western blotting, IHC = Immunohistochemistry, IF = Immunofluorescence, IP = Immunoprecipitation

Immunogen information

Immunogen:	Ag3730
GenBank accession number:	BC007330
Gene ID (NCBI):	23499
Full name:	Microtubule-actin crosslinking factor 1

Product information

Purification method:	Antigen affinity purification
Storage:	PBS with 0.1% sodium azide and 50% glycerol pH 7.3. Store at -20°C.

Transfected HEK-293 cells
were subjected to SDS PAGE
followed by western blot with
13058-1-AP(MACF1
Antibody) at dilution of
1:1000