

ARHGEF7 Polyclonal Antibody

Catalog number: 14092-1-AP

Size: 22 µg/150 µl

Source: Rabbit

Isotype: IgG

Synonyms:

ARHGEF7; ARHGEF7, BETA

PIX, COOL 1, COOL1,

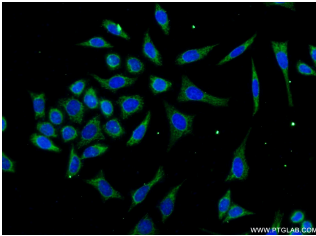
DKFZp686C12170,

DKFZp761K1021, KIAA0142,

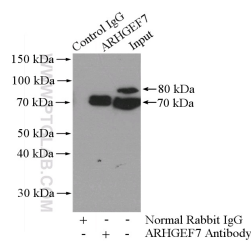
KIAA0412, Nbla10314, P50,

P50BP, P85, P85COOL1,

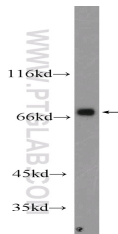
P85SPR, PAK3, PAK3BP, PIXB



Immunofluorescent analysis of (-20% Ethanol) fixed HeLa cells using 14092-1-AP(ARHGEF7 Antibody) at dilution of 1:25 and Alexa Fluor 488-conjugated AffiniPure Goat Anti-Rabbit IgG(H+L)



IP Result of anti-ARHGEF7 (IP:14092-1-AP, 4µg; Detection:14092-1-AP 1:1000) with HeLa cells lysate 1200µg.



NIH/3T3 cells were subjected to SDS PAGE followed by western blot with 14092-1-AP(ARHGEF7 Antibody) at dilution of 1:1000

Applications

Tested applications:	ELISA, IP, WB, IF
Cited applications:	WB
Species specificity:	Human, Mouse, Rat; other species not tested.
Cited species:	Human
Calculated ARHGEF7 MW:	803aa, 90 kDa
Observed ARHGEF7 MW:	70 kDa
Positive WB detected in	NIH/3T3 cells, HeLa cells, Jurkat cells, K-562 cells, mouse skeletal muscle tissue
Positive IP detected in	HeLa cells
Positive IF detected in	HeLa cells
Recommended dilution:	WB: 1:500-1:5000 IP: 1:500-1:5000 IF: 1:10-1:100

Application key: WB = Western blotting, IHC = Immunohistochemistry, IF = Immunofluorescence, IP = Immunoprecipitation

Immunogen information

Immunogen:	Ag5223
GenBank accession number:	BC060776
Gene ID (NCBI):	8874
Full name:	Rho guanine nucleotide exchange factor (GEF) 7

Product information

Purification method:	Antigen affinity purification
Storage:	PBS with 0.02% sodium azide and 50% glycerol pH 7.3. Store at -20°C.