

BOULE Polyclonal Antibody

Catalog number: 13720-1-AP

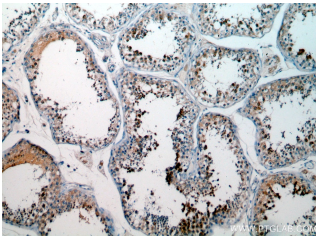
Size: 20 µg/150 µl

Source: Rabbit

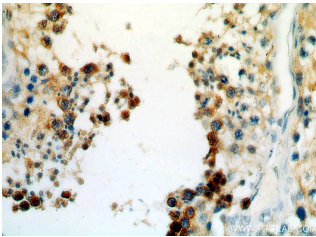
Isotype: IgG

Synonyms:

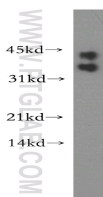
BOLL; bol, boule like
(Drosophila), BOLL, BOULE,
Protein boule like



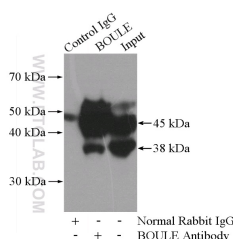
Immunohistochemical of paraffin-embedded human testis using 13720-1-AP (BOLL antibody) at dilution of 1:50 (under 10x lens)



Immunohistochemical of paraffin-embedded human testis using 13720-1-AP (BOLL antibody) at dilution of 1:50 (under 40x lens)



mouse testis tissue were subjected to SDS PAGE followed by western blot with 13720-1-AP (BOLL antibody) at dilution of 1:400



IP Result of anti-BOLL

(IP:13720-1-AP, 4µg;

Applications

| | |
|--------------------------|--|
| Tested applications: | ELISA, WB, IHC, IP |
| Species specificity: | Human, Mouse, Rat; other species not tested. |
| Calculated BOULE MW: | 283aa, 31 kDa |
| Observed BOULE MW: | 38-42 kDa |
| Positive WB detected in | Mouse testis tissue |
| Positive IP detected in | Mouse testis tissue |
| Positive IHC detected in | Human testis tissue |
| Recommended dilution: | WB: 1:200-1:2000 |
| | IP: 1:500-1:5000 |
| | IHC: 1:20-1:200 |

Application key: WB = Western blotting, IHC = Immunohistochemistry, IF = Immunofluorescence, IP = Immunoprecipitation

Immunogen information

| | |
|---------------------------|------------------------------|
| Immunogen: | Ag4662 |
| GenBank accession number: | BC033674 |
| Gene ID (NCBI): | 66037 |
| Full name: | Bol, boule-like (Drosophila) |

Product information

| | |
|----------------------|--|
| Purification method: | Antigen affinity purification |
| Storage: | PBS with 0.02% sodium azide and 50% glycerol pH 7.3. Store at -20°C. |

Detection:13720-1-AP 1:1000)
with mouse testis tissue lysate
4000ug.