

## MLF2 Polyclonal Antibody

Catalog number: 11835-1-AP

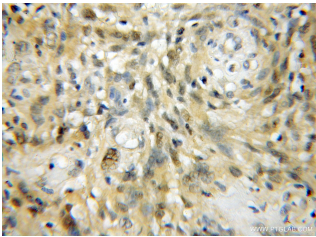
Size: 34 µg/150 µl

Source: Rabbit

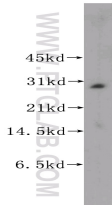
Isotype: IgG

Synonyms:

MLF2; MLF2, myeloid leukemia factor 2, NTN4



Immunohistochemical of paraffin-embedded human gliomas using 11835-1-AP (MLF2 antibody) at dilution of 1:50 (under 10x lens)



human brain tissue were subjected to SDS PAGE followed by western blot with 11835-1-AP (MLF2 antibody) at dilution of 1:400

### Applications

Tested applications:	ELISA, WB, IHC
Species specificity:	Human, Mouse, Rat; other species not tested.
Calculated MLF2 MW:	248aa, 28 kDa
Observed MLF2 MW:	28 kDa
Positive WB detected in:	Human brain tissue
Positive IHC detected in:	Human gliomas tissue
Recommended dilution:	WB: 1:500-1:5000 IHC: 1:20-1:200

Application key: WB = Western blotting, IHC = Immunohistochemistry, IF = Immunofluorescence, IP = Immunoprecipitation

### Immunogen information

Immunogen:	Ag2270
GenBank accession number:	BC000898
Gene ID (NCBI):	8079
Full name:	Myeloid leukemia factor 2

### Product information

Purification method:	Antigen affinity purification
Storage:	PBS with 0.1% sodium azide and 50% glycerol pH 7.3. Store at -20°C.