

GLRA2 Polyclonal Antibody

Catalog number: 13831-1-AP

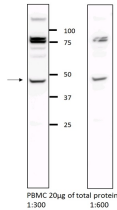
Size: 23 µg/150 µl

Source: Rabbit

Isotype: IgG

Synonyms:

GLRA2; GLR, GLRA2, glycine receptor, alpha 2



WB result of GLRA2 antibody (13831-1-AP, 1:600) with PBMC cells.

Proteintech αGLRA2 13831-1-AP in 10% BSA / TBS 0.05% Tween-20 O/N @ 4°C Goat anti-rabbit HRP 1:10000 in 5% milk / TBS 0.05% Tween-20 1h @ RT.

Background

Glycine is an inhibitory neurotransmitter in the central nervous system. The glycine receptor (GlyR) is a member of the nicotinic acetylcholine receptor of ligand-gated ion channels. This receptor has important roles in a variety of physiological processes, especially in mediating inhibitory neurotransmission in the spinal cord and brain stem. GlyR is a pentameric receptor comprised of alpha and beta subunits. Four alpha-subunits (GLRA1, GLRA2, GLRA3, GLRA4) and one beta-subunit (GLRB) of GlyR have been identified. (PMID: 11409700; 15383648)

Applications

Tested applications:	ELISA, WB
Species specificity:	Human, Mouse, Rat; other species not tested.
Calculated GLRA2 MW:	452aa; 52 kDa
Observed GLRA2 MW:	48 kDa
Positive WB detected in	PBMC cells
Recommended dilution:	WB: 1:300-1:1200

Application key: WB = Western blotting, IHC = Immunohistochemistry, IF = Immunofluorescence, IP = Immunoprecipitation

Immunogen information

Immunogen:	Ag4743
GenBank accession number:	BC032864
Gene ID (NCBI):	2742
Full name:	Glycine receptor, alpha 2

Product information

Purification method:	Antigen affinity purification
Storage:	PBS with 0.1% sodium azide and 50% glycerol pH 7.3. Store at -20°C.