

MEST Polyclonal Antibody

Catalog number: 11118-1-AP

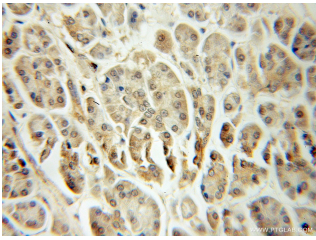
Size: 38 µg/150 µl

Source: Rabbit

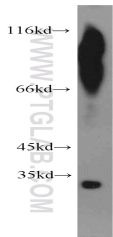
Isotype: IgG

Synonyms:

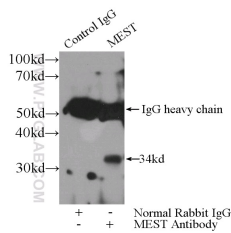
MEST; DKFZp686L18234, MEST, PEG1



Immunohistochemical of paraffin-embedded human pancreas cancer using 11118-1-AP(MEST antibody) at dilution of 1:100 (under 10x lens)



human testis tissue were subjected to SDS PAGE followed by western blot with 11118-1-AP(MEST antibody) at dilution of 1:500



IP Result of anti-MEST (IP:11118-1-AP, 3µg; Detection:11118-1-AP 1:500) with P C-3 cells lysate 1720ug.

Background

MEST(Mesoderm-specific transcript homolog protein) is also named as PEG1 and belongs to the AB hydrolase superfamily. The gene is a imprinting gene, which is associated with growth of mesodermal origin cells(PMID:20339302) and plays important roles in embryo development(PMID:21375506). It is also a novel regulator of Wnt/CTNNB signalling during adipogenic differentiation(PMID:21375506). It has 3 isoforms produced by alternative splicing and the full length protein has a glycosylation site.

Applications

Tested applications:	ELISA, WB, IHC, IP
Cited applications:	IHC, WB
Species specificity:	Human,Mouse,Rat; other species not tested.
Cited species:	Human, mouse
Calculated MEST MW:	38 kDa
Observed MEST MW:	34kd
Positive WB detected in	Human testis tissue, mouse testis tissue, PC-3 cells
Positive IP detected in	PC-3 cells
Positive IHC detected in	Human pancreas cancer tissue
Recommended dilution:	WB: 1:200-1:2000
	IP: 1:200-1:2000
	IHC: 1:20-1:200

Application key: WB = Western blotting, IHC = Immunohistochemistry, IF = Immunofluorescence, IP = Immunoprecipitation

Immunogen information

Immunogen:	Ag1617
GenBank accession number:	BC011908
Gene ID (NCBI):	4232
Full name:	Mesoderm specific transcript homolog (mouse)

Product information

Purification method:	Antigen affinity purification
Storage:	PBS with 0.1% sodium azide and 50% glycerol pH 7.3. Store at -20°C.