

MAGEB1 Polyclonal Antibody

Catalog number: 12400-1-AP

Size: 51 µg/150 µl

Source: Rabbit

Isotype: IgG

Synonyms:

MAGEB1; Cancer/testis antigen

3.1, CT3.1, DAM10, MAGE B1

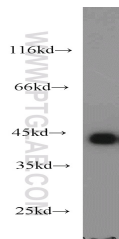
antigen, MAGE Xp, MAGE XP

antigen, MAGEB1, MAGEL1,

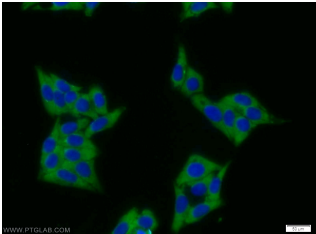
MAGEXP, melanoma antigen

family B, 1, Melanoma

associated antigen B1



HepG2 cells were subjected to SDS PAGE followed by western blot with 12400-1-AP(MAGEB1 antibody) at dilution of 1:2000



Immunofluorescent analysis of HepG2 cells using 12400-1-AP(MAGEB1 Antibody) at dilution of 1:25 and Alexa Fluor 488-conjugated AffiniPure Goat Anti-Rabbit IgG(H+L)

Background

MAGEB1, also named as MAGEL1, MAGEXP, DAM10 and CT3.1, is a member of the MAGEB gene family. MAGE genes encode for tumor-rejection antigens and are expressed in tumors of different histologic types and Testis/placenta, but not in other normal tissues. The MW of MAGEB1 is about 40-45kd.

Applications

Tested applications:	ELISA, WB, IF
Species specificity:	Human; other species not tested.
Calculated MAGEB1 MW:	347aa,39 kDa
Observed MAGEB1 MW:	43-45 kDa
Positive WB detected in	HepG2 cells, A375 cells
Positive IF detected in	HepG2 cells, A375 cells
Recommended dilution:	WB: 1:500-1:5000
	IF: 1:10-1:100

Application key: WB = Western blotting, IHC = Immunohistochemistry, IF = Immunofluorescence, IP = Immunoprecipitation

Immunogen information

Immunogen:	Ag3094
GenBank accession number:	BC013772
Gene ID (NCBI):	4112
Full name:	Melanoma antigen family B, 1

Product information

Purification method:	Antigen affinity purification
Storage:	PBS with 0.1% sodium azide and 50% glycerol pH 7.3. Store at -20°C.