

ABCD1 Polyclonal Antibody

Catalog number: 11159-1-AP

Size: 20 µg/150 µl

Source: Rabbit

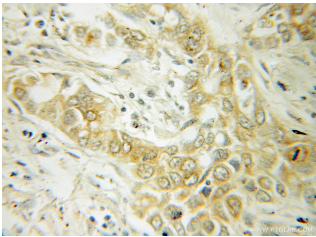
Isotype: IgG

Synonyms:

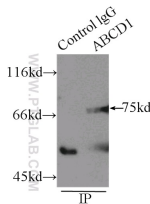
ABCD1; ABC42, ABCD1,

Adrenoleukodystrophy protein,

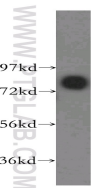
ALD, ALDP, AMN



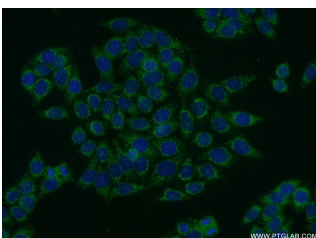
Immunohistochemical of paraffin-embedded human lung cancer using 11159-1-AP(ABCD1 antibody) at dilution of 1:50 (under 10x lens)



IP Result of anti-ABCD1 (IP:11159-1-AP, 4µg; Detection:11159-1-AP 1:500) with mouse liver tissue lysate 5000µg.



human brain tissue were subjected to SDS PAGE followed by western blot with 11159-1-AP(ABCD1 antibody) at dilution of 1:300



Immunofluorescent analysis of HeLa cells using 11159-1-AP(ABCD1 Antibody) at

Background

ABCD1 (also known as ALDP) is a member of the ATP-binding cassette (ABC) transporter superfamily which functions as transporter for a wide variety of substrates. It localizes to the peroxisomal membrane. The exact function is not clear so far. Various mutations of ABCD1 cause X-linked adrenoleukodystrophy (X-ALD), an inherited neurodegenerative disease affecting the nervous system white matter and adrenal cortex.

Applications

| | |
|--------------------------|---|
| Tested applications: | ELISA, WB, IHC, IP, IF |
| Species specificity: | Human, Mouse, Rat; other species not tested. |
| Calculated ABCD1 MW: | 745aa, 83 kDa |
| Observed ABCD1 MW: | 75 kDa |
| Positive WB detected in | Human brain tissue, HeLa cells, mouse liver tissue |
| Positive IP detected in | Mouse liver tissue |
| Positive IHC detected in | Human lung cancer tissue |
| Positive IF detected in | HeLa cells |
| Recommended dilution: | WB: 1:500-1:5000 IP: 1:200-1:2000 IHC: 1:20-1:200 IF: 1:20-1:200 |

Application key: WB = Western blotting, IHC = Immunohistochemistry, IF = Immunofluorescence, IP = Immunoprecipitation

Immunogen information

| | |
|---------------------------|--|
| Immunogen: | Ag1635 |
| GenBank accession number: | BC025358 |
| Gene ID (NCBI): | 215 |
| Full name: | ATP-binding cassette, sub-family D (ALD), member 1 |

Product information

| | |
|----------------------|---|
| Purification method: | Antigen affinity purification |
| Storage: | PBS with 0.1% sodium azide and 50% glycerol pH 7.3. Store at -20°C. |

dilution of 1:50 and Alexa
Fluor 488-conjugated
AffiniPure Goat Anti-Rabbit
IgG(H+L)