

SERPING1 Polyclonal Antibody

Catalog number: 12259-1-AP

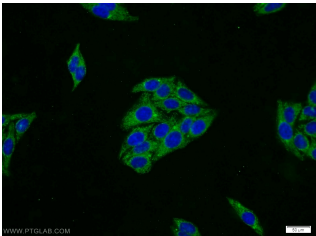
Size: 29 µg/150 µl

Source: Rabbit

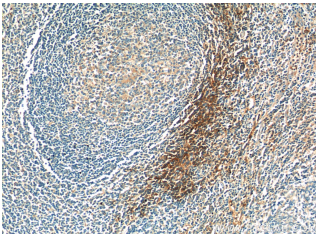
Isotype: IgG

Synonyms:

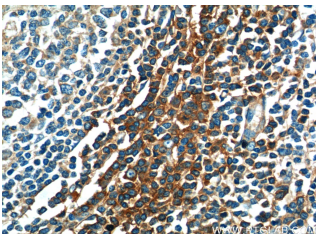
SERPING1; C1 esterase inhibitor, C1 Inh, C1 inhibiting factor, C1IN, C1INH, C1NH, HAE1, HAE2, Plasma protease C1 inhibitor, Serpin G1, SERPING1



Immunofluorescent analysis of HepG2 cells using 12259-1-AP (SERPING1 Antibody) at dilution of 1:25 and Alexa Fluor 488-conjugated AffiniPure Goat Anti-Rabbit IgG(H+L)



Immunohistochemistry of paraffin-embedded human tonsillitis tissue slide using 12259-1-AP (SERPING1 Antibody) at dilution of 1:50 (under 10x lens)



Immunohistochemistry of paraffin-embedded human tonsillitis tissue slide using 12259-1-AP (SERPING1 Antibody) at dilution of 1:50 (under 40x lens)

Applications

Tested applications:	ELISA, IHC, IF, WB
Cited applications:	WB
Species specificity:	Human, Mouse; other species not tested.
Cited species:	Human
Calculated SERPING1 MW:	500aa, 55 kDa
Observed SERPING1 MW:	55 kDa
Positive WB detected in	Mouse liver tissue, HeLa cells, HepG2 cells, human liver tissue, L02 cells
Positive IHC detected in	Human tonsillitis tissue
Positive IF detected in	HepG2 cells
Recommended dilution:	WB: 1:500-1:5000 IHC: 1:20-1:200 IF: 1:10-1:100

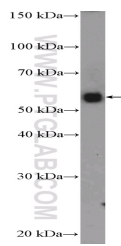
Application key: WB = Western blotting, IHC = Immunohistochemistry, IF = Immunofluorescence, IP = Immunoprecipitation

Immunogen information

Immunogen:	Ag2819
GenBank accession number:	BC011171
Gene ID (NCBI):	710
Full name:	Serpin peptidase inhibitor, clade G (C1 inhibitor), member 1

Product information

Purification method:	Antigen affinity purification
Storage:	PBS with 0.1% sodium azide and 50% glycerol pH 7.3. Store at -20°C.



**mouse liver tissue were
subjected to SDS PAGE
followed by western blot with
12259-1-AP(SERPING1
Antibody) at dilution of
1:1000**