

## PPP1R12B Polyclonal Antibody

Catalog number: 13366-1-AP

Size: 20 µg/150 µl

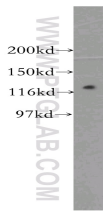
Source: Rabbit

Isotype: IgG

Synonyms:

PPP1R12B; MGC131980;

MGC87886; MYPT2



mouse skeletal muscle tissue were subjected to SDS PAGE followed by western blot with 13366-1-AP(PPP1R12B Antibody) at dilution of 1:1600

### Applications

Tested applications:	ELISA, WB
Species specificity:	Human, mouse, rat; other species not tested.
Positive WB detected in:	Mouse skeletal muscle tissue
Calculated PPP1R12B MW:	982aa,110kd
Observed PPP1R12B MW:	125kd
Recommended dilution:	WB: 1:500-1:5000

Application key: WB = Western blotting, IHC = Immunohistochemistry, IF = Immunofluorescence, IP =

Immunoprecipitation, FC = Flow cytometry

### Immunogen information

Immunogen:	Ag4185
GenBank accession number:	BC034430
Gene ID (NCBI):	4660
Full name:	Protein phosphatase 1, regulatory (inhibitor) subunit 12B

### Product information

Purification method:	Antigen affinity purification
Storage:	PBS with 0.02% sodium azide and 50% glycerol pH 7.3. Store at -20°C.