

## FKBP1A Polyclonal Antibody

Catalog number: 10273-1-AP

Size: 39 µg/150 µl

Source: Rabbit

Isotype: IgG

Synonyms:

FKBP1A; 12 kDa FK506 binding protein, 12 kDa FKBP, FK506

binding protein 1A, FKBP 12,

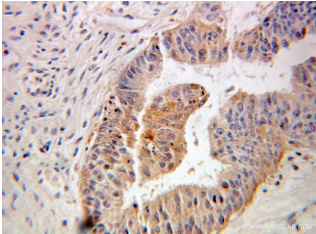
FKBP 1A, FKBP1, FKBP12,

FKBP12C, FKBP1A,

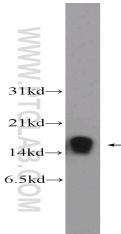
Immunophilin FKBP12, PKC12,

PKC12, PPIASE, PPIase

FKBP1A, Rotamase



Immunohistochemical of paraffin-embedded human ovary tumor using 10273-1-AP (FKBP1A antibody) at dilution of 1:100 (under 25x lens)



mouse brain tissue were subjected to SDS PAGE followed by western blot with 10273-1-AP (FKBP1A Antibody) at dilution of 1:1000

### Background

FKBP1A (FK506-binding protein 1A) is also named as FKBP1, FKBP12 and belongs to the FKBP-type PPIase family. It keeps in an inactive conformation TGFBR1, the TGF-beta type I serine/threonine kinase receptor, preventing TGF-beta receptor activation in absence of ligand and catalyzes the cis-trans isomerization of proline imidic peptide bonds in oligopeptides.

### Applications

Tested applications:	ELISA, IHC, WB
Cited applications:	WB
Species specificity:	Human, Mouse; other species not tested.
Cited species:	Human
Calculated FKBP1A MW:	12 kDa
Observed FKBP1A MW:	12-16 kDa
Positive WB detected in	Mouse brain tissue, human heart tissue
Positive IHC detected in	Human ovary tumor tissue
Recommended dilution:	WB: 1:500-1:5000 IHC: 1:20-1:200

Application key: WB = Western blotting, IHC = Immunohistochemistry, IF = Immunofluorescence, IP = Immunoprecipitation

### Immunogen information

Immunogen:	Ag0406
GenBank accession number:	BC001925
Gene ID (NCBI):	2280
Full name:	FK506 binding protein 1A, 12kDa

### Product information

Purification method:	Antigen affinity purification
Storage:	PBS with 0.1% sodium azide and 50% glycerol pH 7.3. Store at -20°C.