

IGFBP2 Polyclonal Antibody

Catalog number: 11065-3-AP

Size: 20 µg/150 µl

Source: Rabbit

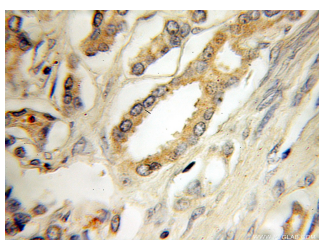
Isotype: IgG

Synonyms:

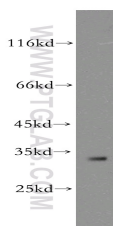
IGFBP2; BP2, IBP 2, IBP2, IGF

binding protein 2, IGF BP53,

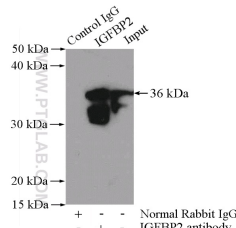
IGFBP 2, IGFBP2



Immunohistochemical of paraffin-embedded human prostate cancer using 11065-3-AP (IGFBP2 antibody) at dilution of 1:50 (under 10x lens)



MCF7 cells were subjected to SDS PAGE followed by western blot with 11065-3-AP (IGFBP2 antibody) at dilution of 1:300



IP Result of anti-IGFBP2 (IP:11065-3-AP, 4ug; Detection:11065-3-AP 1:300) with SH-SY5Y cells lysate 1200ug.

Background

Insulin-like growth factors (IGFs) and their binding proteins (IGFBPs) have important metabolic roles in the human body. IGFBP-2 is a 34 kD IGFBP protein with degraded fragments of 24 kD, 19kD and 15kD. The levels of IGFBP2 are elevated during progression of many human cancers.

Applications

Tested applications:	ELISA, WB, IHC, IP
Cited applications:	WB
Species specificity:	Human, Mouse; other species not tested.
Cited species:	Mouse
Calculated IGFBP2 MW:	36 kDa or 53 kDa
Observed IGFBP2 MW:	36kD
Positive WB detected in	MCF7 cells
Positive IP detected in	SH-SY5Y cells
Positive IHC detected in	Human prostate cancer tissue
Recommended dilution:	WB: 1:200-1:2000 IP: 1:200-1:1000 IHC: 1:20-1:200

Application key: WB = Western blotting, IHC = Immunohistochemistry, IF = Immunofluorescence, IP = Immunoprecipitation

Immunogen information

Immunogen:	Ag1535
GenBank accession number:	BC009902
Gene ID (NCBI):	3485
Full name:	Insulin-like growth factor binding protein 2, 36kDa

Product information

Purification method:	Antigen affinity purification
Storage:	PBS with 0.1% sodium azide and 50% glycerol pH 7.3. Store at -20°C.