

CaMKII gamma Polyclonal Antibody

Catalog number: 12666-2-AP

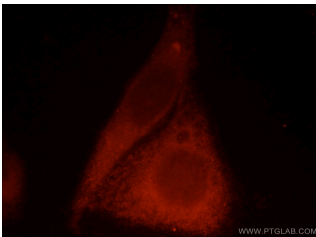
Size: 24 µg/150 µl

Source: Rabbit

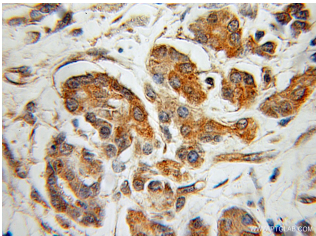
Isotype: IgG

Synonyms:

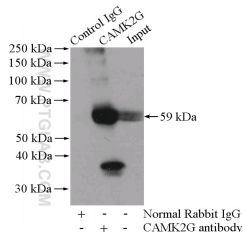
CAMK2G; CaM kinase II subunit gamma, CAMK, CAMK II, CaMK II subunit gamma, CAMK2G, CAMKG, FLJ16043



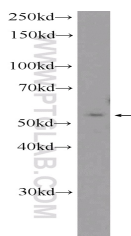
Immunofluorescent analysis of HepG2 cells, using CAMK2G antibody 12666-2-AP at 1:25 dilution and Rhodamine-labeled goat anti-rabbit IgG (red).



Immunohistochemical of paraffin-embedded human pancreas cancer using 12666-2-AP(CAMK2G antibody) at dilution of 1:100 (under 10x lens)



IP Result of anti-CAMK2G (IP:12666-2-AP, 4µg; Detection:12666-2-AP 1:1000) with mouse heart tissue lysate 3200µg.



Background

CaMKII gamma, also named as CAMKG, belongs to the protein kinase superfamily, CAMK Ser/Thr protein kinase family and CaMK subfamily. CAMK2 is a prominent kinase in the central nervous system that may function in long-term potentiation and neurotransmitter release. CAMK2G has been shown to be expressed in human beta cells as a candidate gene for Type II (non-insulin-dependent) diabetes mellitus. Some study can be used to assess the role of CAMK2G in the susceptibility to Type II diabetes.(PMID: 12032636) This antibody can recognize all the 9 isoforms of CAMK2G. So the band in WB is from 50-65kd. This antibody can bind all the CAMK2s for the close sequences.

Applications

Tested applications:	ELISA, IHC, IF, WB, IP
Cited applications:	IF, WB
Species specificity:	Human, Mouse, Rat; other species not tested.
Cited species:	Human, mouse
Calculated CaMKII gamma MW:	527aa, 59 kDa
Observed CaMKII gamma MW:	59 kDa
Positive WB detected in	SMMC-7721 cells, human brain tissue
Positive IP detected in	Mouse heart tissue
Positive IHC detected in	Human pancreas cancer tissue
Positive IF detected in	HepG2 cells
Recommended dilution:	WB: 1:1000-1:10000 IP: 1:500-1:5000 IHC: 1:20-1:200 IF: 1:10-1:100

Application key: WB = Western blotting, IHC = Immunohistochemistry, IF = Immunofluorescence, IP = Immunoprecipitation

Immunogen information

Immunogen:	Ag3348
GenBank accession number:	BC034044
Gene ID (NCBI):	818
Full name:	Calcium/calmodulin-dependent protein kinase II gamma

Product information

Purification method:	Antigen affinity purification
Storage:	PBS with 0.1% sodium azide and 50% glycerol pH 7.3. Store at -20°C.

SMMC-7721 cells were
subjected to SDS PAGE
followed by western blot with
12666-2-AP(CAMK2G
Antibody) at dilution of
1:2000