

RTN2 Polyclonal Antibody

Catalog number: 11168-1-AP

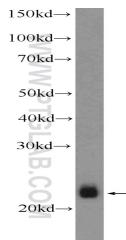
Size: 45 µg/150 µl

Source: Rabbit

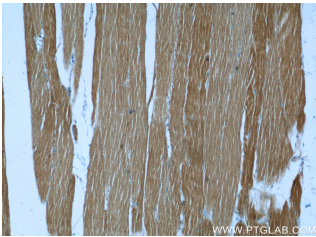
Isotype: IgG

Synonyms:

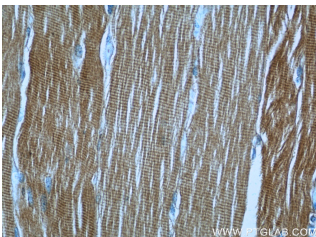
RTN2; NSP like protein 1, NSP like protein I, NSP2, NSPL1, NSPLI, reticulon 2, RTN2



mouse skeletal muscle tissue were subjected to SDS PAGE followed by western blot with 11168-1-AP (RTN2 Antibody) at dilution of 1:1000



Immunohistochemistry of paraffin-embedded human skeletal muscle slide using 11168-1-AP (RTN2 Antibody) at dilution of 1:50



Immunohistochemistry of paraffin-embedded human skeletal muscle slide using 11168-1-AP (RTN2 Antibody) at dilution of 1:50

Background

Reticulon (RTN) proteins are a group of membrane-bound proteins that largely reside in endoplasmic reticulum (ER) (PMID: 18177508). Reticulon proteins share a common sequence feature, the reticulon homology domain (RHD). They are involved in shaping the tubular endoplasmic reticulum network, membrane trafficking, inhibition of axonal growth, and apoptosis (PMID: 24218324). Four mammalian reticulons (RTN1-4) exist. Human RTN2 gene produces three isoforms termed RTN2-A, RTN2-B, and RTN2-C. Isoform RTN2-C has a calculated molecular weight of 22 kDa and is highly expressed in skeletal muscle.

Applications

Tested applications:	ELISA, IHC, WB
Species specificity:	Human, Mouse, Rat; other species not tested.
Calculated RTN2 MW:	59 kDa, 51 kDa, 22 kDa
Observed RTN2 MW:	20-23kd
Positive WB detected in	Mouse skeletal muscle tissue, human skeletal muscle tissue
Positive IHC detected in	Human skeletal muscle tissue
Recommended dilution:	WB: 1:500-1:5000 IHC: 1:20-1:200

Application key: WB = Western blotting, IHC = Immunohistochemistry, IF = Immunofluorescence, IP = Immunoprecipitation

Immunogen information

Immunogen:	Ag1655
GenBank accession number:	BC014244
Gene ID (NCBI):	6253
Full name:	Reticulon 2

Product information

Purification method:	Antigen affinity purification
Storage:	PBS with 0.02% sodium azide and 50% glycerol pH 7.3. Store at -20°C.