

PKC beta Polyclonal Antibody

Catalog number: 12919-1-AP

Size: 26 µg/150 µl

Source: Rabbit

Isotype: IgG

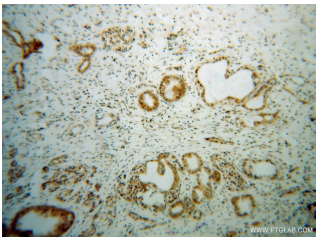
Synonyms:

PRKCB; PKC B, PKC beta, PKCB,

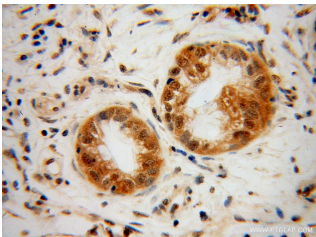
PRKCB, PRKCB1, PRKCB2,

Protein kinase C beta type,

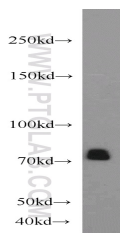
protein kinase C, beta



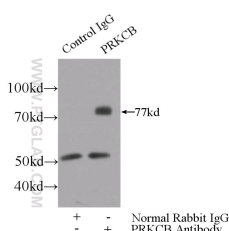
Immunohistochemical of paraffin-embedded human pancreas cancer using 12919-1-AP (PRKCB antibody) at dilution of 1:50 (under 10x lens)



Immunohistochemical of paraffin-embedded human pancreas cancer using 12919-1-AP (PRKCB antibody) at dilution of 1:50 (under 40x lens)



mouse brain tissue were subjected to SDS PAGE followed by western blot with 12919-1-AP (PRKCB antibody) at dilution of 1:1000



IP Result of anti-PRKCB

Applications

Tested applications:	ELISA, WB, IHC, IP
Cited applications:	WB
Species specificity:	Human, Mouse, Rat; other species not tested.
Cited species:	Human
Calculated PKC beta MW:	673aa, 77 kDa
Observed PKC beta MW:	77 kDa
Positive WB detected in	Mouse brain tissue, K-562 cells, mouse thymus tissue, rat brain tissue
Positive IP detected in	Mouse brain tissue
Positive IHC detected in	Human pancreas cancer tissue, human breast cancer tissue, human stomach tissue
Recommended dilution:	WB: 1:500-1:5000 IP: 1:500-1:5000 IHC: 1:20-1:200

Application key: WB = Western blotting, IHC = Immunohistochemistry, IF = Immunofluorescence, IP = Immunoprecipitation

Immunogen information

Immunogen:	Ag3591
GenBank accession number:	BC036472
Gene ID (NCBI):	5579
Full name:	Protein kinase C, beta

Product information

Purification method:	Antigen affinity purification
Storage:	PBS with 0.1% sodium azide and 50% glycerol pH 7.3. Store at -20°C.

**(IP:12919-1-AP, 3ug;
Detection:12919-1-AP 1:1000)
with mouse brain tissue lysate
4000ug.**