

## Integrin beta-1 Polyclonal Antibody

Catalog number: 12594-1-AP

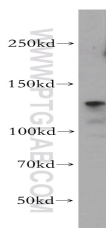
Size: 97 µg/150 µl

Source: Rabbit

Isotype: IgG

Synonyms:

ITGB1; CD29, FN1, GPIIb/IIIa, Integrin beta 1, ITB1, ITGB1, MDF2, MSK12, VLA 4 subunit beta, VLA BETA, VLAB



HeLa cells were subjected to SDS PAGE followed by western blot with 12594-1-AP (ITGB1 antibody) at dilution of 1:300

### Background

Integrin beta-1 (ITGB1), also named as CD29, is a 130 kDa single chain type I glycoprotein that is expressed in a heterodimeric complex with one of six distinct  $\alpha$  subunits, comprising the very late activation antigen (VLA) subfamily of adhesion receptors. It is one of the essential surface molecules expressed on human MSC from bone marrow and other sources. The  $\beta$ 1 subunit is also broadly expressed on lymphocytes and monocytes, weakly expressed on granulocytes, and not expressed on erythrocytes. These receptors are involved in a variety of cell-cell and cell-matrix interactions.

### Applications

Tested applications:	ELISA, WB
Cited applications:	WB
Species specificity:	Human, Mouse, Rat; other species not tested.
Cited species:	Human, rat
Calculated Integrin beta-1 MW:	130 kDa
Observed Integrin beta-1 MW:	130 kDa
Positive WB detected in	HeLa cells, HT-1080 cells
Recommended dilution:	WB: 1:200-1:1000

Application key: WB = Western blotting, IHC = Immunohistochemistry, IF = Immunofluorescence, IP = Immunoprecipitation

### Immunogen information

Immunogen:	Ag3078
GenBank accession number:	BC020057
Gene ID (NCBI):	3688
Full name:	Integrin, beta 1 (fibronectin receptor, beta polypeptide, antigen CD29 includes MDF2, MSK12)

### Product information

Purification method:	Antigen affinity purification
Storage:	PBS with 0.1% sodium azide and 50% glycerol pH 7.3. Store at -20°C.