

## Cyclin E1 Polyclonal Antibody

Catalog number: 11554-1-AP

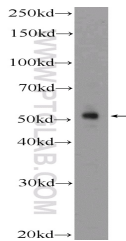
Size: 20 µg/150 µl

Source: Rabbit

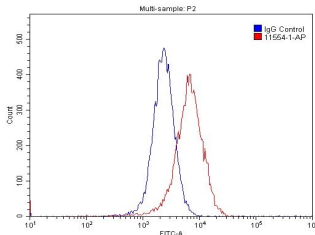
Isotype: IgG

Synonyms:

CCNE1; CCNE, CCNE1, cyclin E1, G1/S specific cyclin E1



K-562 cells were subjected to SDS PAGE followed by western blot with 11554-1-AP ( Cyclin E Antibody) at dilution of 1:600



1X10<sup>6</sup> MCF-7 cells were stained with 0.2µg Cyclin E antibody (11554-1-AP, red) and control antibody (blue). Fixed with 4% PFA blocked with 3% BSA (30 min). Alexa Fluor 488-conjugated AffiniPure Goat Anti-Rabbit IgG(H+L) with dilution 1:1500.

### Background

Cyclin E1 (CCNE1) is a member of the highly conserved cyclin family, whose members are characterized by a dramatic periodicity in protein abundance through the cell cycle. CCNE1, an essential cyclin activating Cdk2, regulates the G1-S phase transition of the mammalian cell division cycle. Its timing expression plays a direct role in the initiation of DNA replication, the control of histone biosynthesis, and the centrosome cycle. CCNE1 is associated with disease progression in various malignancies and is associated clinically with poor prognosis.

### Applications

Tested applications:	ELISA, WB, FC
Cited applications:	WB
Species specificity:	Human,Mouse,Rat; other species not tested.
Cited species:	Human, mouse, zebrafish
Calculated Cyclin E1 MW:	410aa,47 kDa
Observed Cyclin E1 MW:	53 kDa
Positive WB detected in	K-562 cells, HeLa cells, human lung tissue, Jurkat cells, NIH/3T3 cells
Positive FC detected in	MCF-7 cells
Recommended dilution:	WB: 1:200-1:2000 FC: N/A

Application key: WB = Western blotting, IHC = Immunohistochemistry, IF = Immunofluorescence, IP = Immunoprecipitation

### Immunogen information

Immunogen:	Ag2110
GenBank accession number:	BC035498
Gene ID (NCBI):	898
Full name:	Cyclin E1

### Product information

Purification method:	Antigen affinity purification
Storage:	PBS with 0.1% sodium azide and 50% glycerol pH 7.3. Store at -20°C.