

Caspase 4/p20/p10 Polyclonal Antibody

Catalog number: 11856-1-AP

Size: 67 µg/150 µl

Source: Rabbit

Isotype: IgG

Synonyms:

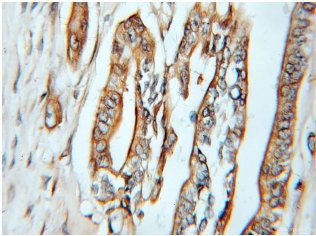
CASP4; CASP 4, CASP4,

Caspase 4, Caspase4, ICE(rel) II,

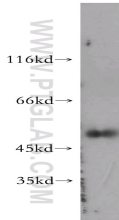
ICE(rel)II, ICEREL II, ICH 2,

ICH2, Mih1/TX, Protease ICH 2,

Protease TX, TX



Immunohistochemical of paraffin-embedded human pancreas cancer using 11856-1-AP (CASP4 antibody) at dilution of 1:50 (under 25x lens)



SGC-7901 cells were subjected to SDS PAGE followed by western blot with 11856-1-AP (CASP4 antibody) at dilution of 1:300

Applications

Tested applications:	ELISA, WB, IHC
Species specificity:	Human; other species not tested.
Calculated Caspase 4/p20/p10 MW:	377aa, 43 kDa
Observed Caspase 4/p20/p10 MW:	48 kDa
Positive WB detected in	SGC-7901 cells, human testis tissue
Positive IHC detected in	Human pancreas cancer tissue
Recommended dilution:	WB: 1:200-1:2000 IHC: 1:20-1:200

Application key: WB = Western blotting, IHC = Immunohistochemistry, IF = Immunofluorescence, IP = Immunoprecipitation

Immunogen information

Immunogen:	Ag2429
GenBank accession number:	BC017839
Gene ID (NCBI):	837
Full name:	Caspase 4, apoptosis-related cysteine peptidase

Product information

Purification method:	Antigen affinity purification
Storage:	PBS with 0.1% sodium azide and 50% glycerol pH 7.3. Store at -20°C.