

STAT5A Polyclonal Antibody

Catalog number: 13179-1-AP

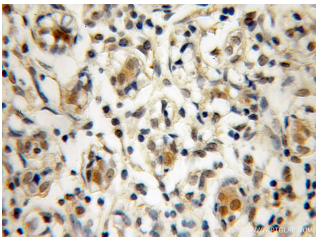
Size: 31 µg/150 µl

Source: Rabbit

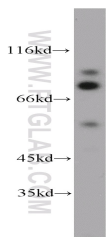
Isotype: IgG

Synonyms:

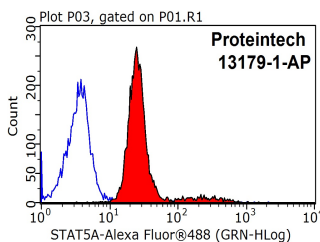
STAT5A; MGF, STAT5, STAT5A



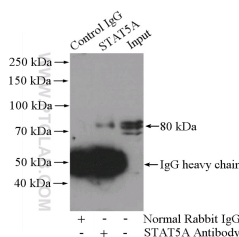
Immunohistochemical of paraffin-embedded human breast cancer using 13179-1-AP(STAT5A antibody) at dilution of 1:100 (under 10x lens)



K-562 cells were subjected to SDS PAGE followed by western blot with 13179-1-AP(STAT5A antibody) at dilution of 1:1000



1X10⁶ MCF-7 cells were stained with 0.2ug STAT5A antibody (13179-1-AP, red) and control antibody (blue). Fixed with 90% MeOH blocked with 3% BSA (30 min). Alexa Fluor 488-conjugated AffiniPure Goat Anti-Rabbit IgG(H+L) with dilution 1:1500.



Background

STAT5A, also named as STAT5, belongs to the transcription factor STAT family. In response to cytokines and growth factors, STAT family members are phosphorylated by the receptor associated kinases, and then form homo- or heterodimers that translocate to the cell nucleus where they act as transcription activators. STAT5A is activated by, and mediates the responses of many cell ligands, such as IL2, IL3, IL7 GM-CSF, erythropoietin, thrombopoietin, and different growth hormones. Activation of STAT5A in myeloma and lymphoma associated with a TEL/JAK2 gene fusion is independent of cell stimulus and has been shown to be essential for the tumorigenesis. The mouse counterpart of human STAT5A is found to induce the expression of BCL2L1/BCL-X(L), which suggests the antiapoptotic function of STAT5A in cells. This antibody is a rabbit polyclonal antibody raised against residues near the C terminus of human STAT5A.

Applications

Tested applications:	ELISA, WB, IHC, FC, IP
Species specificity:	Human, Mouse, Rat; other species not tested.
Calculated STAT5A MW:	794aa, 92 kDa
Observed STAT5A MW:	90-95 kDa, 50-55 kDa
Positive WB detected in	K-562 cells, 3T3-L1 cells, DU 145 cells
Positive IP detected in	3T3-L1 cells
Positive IHC detected in	Human breast cancer tissue, human cervical cancer tissue
Positive FC detected in	MCF-7 cells
Recommended dilution:	WB: 1:500-1:5000 IP: 1:500-1:5000 IHC: 1:20-1:200 FC: N/A

Application key: WB = Western blotting, IHC = Immunohistochemistry, IF = Immunofluorescence, IP = Immunoprecipitation

Immunogen information

Immunogen:	Ag3846
GenBank accession number:	BC027036
Gene ID (NCBI):	6776
Full name:	Signal transducer and activator of transcription 5A

Product information

Purification method:	Antigen affinity purification
Storage:	PBS with 0.02% sodium azide and 50% glycerol pH 7.3. Store at -20°C.

IP Result of anti-STAT5A
(IP:13179-1-AP, 4ug;
Detection:13179-1-AP 1:1000)
with 3T3-L1 cells lysate
3200ug.