

## RPP40 Polyclonal Antibody

Catalog number: 11736-1-AP

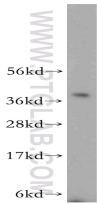
Size: 20 µg/150 µl

Source: Rabbit

Isotype: IgG

Synonyms:

RPP40; RNASEP1; bA428J1.3



HeLa cells were subjected to SDS PAGE followed by western blot with 11736-1-AP(RPP40 Antibody) at dilution of 1:800

### Applications

Tested applications:	ELISA, WB
Species specificity:	Human, mouse, rat; other species not tested.
Positive WB detected in:	HeLa cells
Calculated RPP40 MW:	35kd;41kd
Observed RPP40 MW:	40kd
Recommended dilution:	WB: 1:200-1:2000

Application key: WB = Western blotting, IHC = Immunohistochemistry, IF = Immunofluorescence, IP = Immunoprecipitation, FC = Flow cytometry

### Immunogen information

Immunogen:	Ag2341
GenBank accession number:	BC017871
Gene ID (NCBI):	10799
Full name:	Ribonuclease P/MRP 40kDa subunit

### Product information

Purification method:	Antigen affinity purification
Storage:	PBS with 0.1% sodium azide and 50% glycerol pH 7.3. Store at -20°C.