

SP110 Polyclonal Antibody

Catalog number: 11502-1-AP

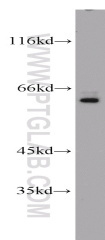
Size: 25 µg/150 µl

Source: Rabbit

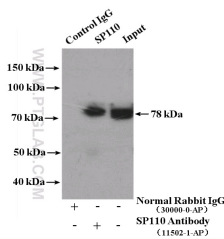
Isotype: IgG

Synonyms:

SP110; FLJ22835, IFI41, IFI75, IPR1, SP110, SP110 nuclear body protein, Speckled 110 kDa, VOD1



HeLa cells were subjected to SDS PAGE followed by western blot with 11502-1-AP (SP110 antibody) at dilution of 1:800



IP Result of anti-SP110 (IP:11502-1-AP, 4µg; Detection:11502-1-AP 1:800) with HeLa cells lysate 4000ug.

Applications

Tested applications:	ELISA, WB, IP
Species specificity:	Human, Mouse; other species not tested.
Calculated SP110 MW:	689aa, 79 kDa
Observed SP110 MW:	62-66 kDa
Positive WB detected in	HeLa cells, A2780 cells, COLO 320 cells, human brain tissue, human testis tissue, Jurkat cells, K-562 cells, mouse brain tissue, mouse small intestine tissue, mouse spleen tissue, P C-3 cells
Positive IP detected in	HeLa cells
Recommended dilution:	WB: 1:200-1:2000 IP: 1:200-1:2000

Application key: WB = Western blotting, IHC = Immunohistochemistry, IF = Immunofluorescence, IP = Immunoprecipitation

Immunogen information

Immunogen:	Ag2042
GenBank accession number:	BC019059
Gene ID (NCBI):	3431
Full name:	SP110 nuclear body protein

Product information

Purification method:	Antigen affinity purification
Storage:	PBS with 0.1% sodium azide and 50% glycerol pH 7.3. Store at -20°C.