

## CBP20 Polyclonal Antibody

Catalog number: 11950-1-AP

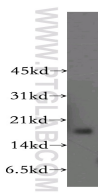
Size: 26 µg/150 µl

Source: Rabbit

Isotype: IgG

Synonyms:

NCBP2; NCBP2, CBC2, NCBP  
interacting protein 1, CBP20,  
NIP1



human heart tissue were subjected to SDS PAGE followed by western blot with 11950-1-AP(CBP20 antibody) at dilution of 1:500

### Applications

Tested applications:	ELISA, WB
Species specificity:	Human, mouse, rat; other species not tested.
Calculated CBP20 MW:	156aa,18 kDa
Observed CBP20 MW:	18kd
Positive WB detected in	Human heart tissue
Recommended dilution:	WB: 1:200-1:2000

Application key: WB = Western blotting, IHC = Immunohistochemistry, IF = Immunofluorescence, IP = Immunoprecipitation

### Immunogen information

Immunogen:	Ag2550
GenBank accession number:	BC001255
Gene ID (NCBI):	22916
Full name:	Nuclear cap binding protein subunit 2, 20kDa

### Product information

Purification method:	Antigen affinity purification
Storage:	PBS with 0.1% sodium azide and 50% glycerol pH 7.3. Store at -20°C.