

## GLRX3 Polyclonal Antibody

Catalog number: 11254-1-AP

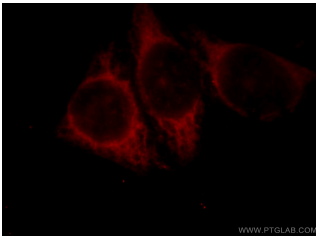
Size: 20 µg/150 µl

Source: Rabbit

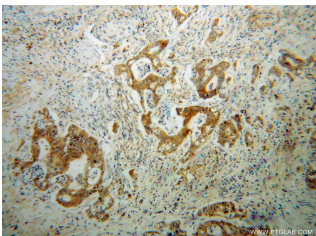
Isotype: IgG

Synonyms:

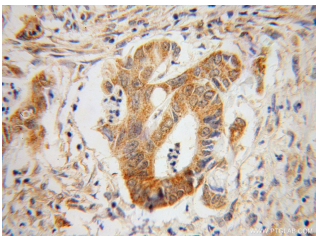
GLRX3; bA500G10.4, FLJ11864, GLRX3, GLRX4, Glutaredoxin 3, GRX3, GRX4, PICOT, PKC theta interacting protein, PKCq interacting protein, Thioredoxin like protein 2, TXNL2, TXNL3



Immunofluorescent analysis of HeLa cells, using GLRX3 antibody 11254-1-AP at 1:25 dilution and Rhodamine-labeled goat anti-rabbit IgG (red).



Immunohistochemical of paraffin-embedded human colon cancer using 11254-1-AP (GLRX3 antibody) at dilution of 1:50 (under 10x lens)



Immunohistochemical of paraffin-embedded human colon cancer using 11254-1-AP (GLRX3 antibody) at dilution of 1:50 (under 40x lens)

### Background

GLRX3 (Glutaredoxin-3) is also named as PICOT, TXNL2. Mammalian glutaredoxin 3 is an essential protein involved in the regulation of signal transduction, for instance during immune cell activation and development of cardiac hypertrophy, presumably in response to redox signals (PMID:20226171). Glrx3 could take a pivotal role in colon and lung cancer cells during the tumorigenesis, which is expressed in lung and colon cancers consistently and preferentially (PMID:19797004).

### Applications

Tested applications:	ELISA, WB, IHC, IF
Cited applications:	IHC
Species specificity:	Human, Mouse, Rat; other species not tested.
Cited species:	Human
Calculated GLRX3 MW:	37kd
Observed GLRX3 MW:	37kd
Positive WB detected in	Human brain tissue, Jurkat cells
Positive IHC detected in	Human colon cancer tissue, human ovary tumor tissue
Positive IF detected in	Hela cells
Recommended dilution:	WB: 1:200-1:2000 IHC: 1:20-1:200 IF: 1:10-1:100

Application key: WB = Western blotting, IHC = Immunohistochemistry, IF = Immunofluorescence, IP = Immunoprecipitation

### Immunogen information

Immunogen:	Ag1775
GenBank accession number:	BC014372
Gene ID (NCBI):	10539
Full name:	Glutaredoxin 3

### Product information

Purification method:	Antigen affinity purification
Storage:	PBS with 0.1% sodium azide and 50% glycerol pH 7.3. Store at -20°C.