

HBS1L Polyclonal Antibody

Catalog number: 10359-1-AP

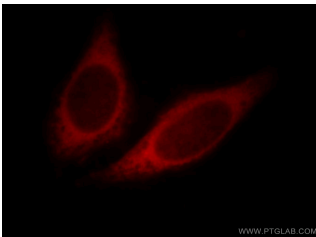
Size: 90 µg/150 µl

Source: Rabbit

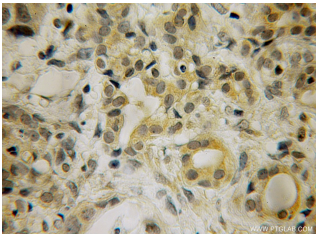
Isotype: IgG

Synonyms:

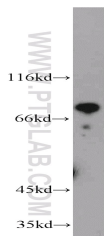
HBS1L; DKFZp686L13262, EF 1a, ERFS, HBS1, HBS1 like (*S. cerevisiae*), HBS1 like protein, HBS1L, HSPC276, KIAA1038



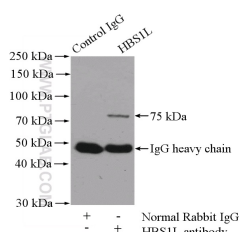
Immunofluorescent analysis of HepG2 cells, using HBS1L antibody 10359-1-AP at 1:25 dilution and Rhodamine-labeled goat anti-rabbit IgG (red).



Immunohistochemical of paraffin-embedded human pancreas cancer using 10359-1-AP (HBS1L antibody) at dilution of 1:50 (under 25x lens)



Jurkat cells were subjected to SDS PAGE followed by western blot with 10359-1-AP (HBS1L antibody) at dilution of 1:2000



IP Result of anti-HBS1L

Background

HBS1L (HBS1-like), also known as EF-1a or ERFS, is a 684 amino acid protein that belongs to the GTP-binding elongation factor family and exists as multiple alternatively spliced isoforms. Expressed in kidney, brain, heart, placenta, liver, muscle and pancreas, HBS1L is thought to play a role in controlling fetal hemoglobin levels, specifically influencing platelet, monocyte and erythrocyte hemoglobin content. The gene encoding HBS1L maps to a locus on human chromosome 6 that is associated with sickle cell anemia and beta-thalassemia, suggesting a role for HBS1L in the pathogenesis of blood disorders. This antibody specifically recognizes the 75kd human HBS1L protein.

Applications

Tested applications:	ELISA, WB, IHC, IF, IP
Cited applications:	WB
Species specificity:	Human, Mouse, Rat; other species not tested.
Cited species:	Human
Calculated HBS1L MW:	75 kDa
Observed HBS1L MW:	75 kDa
Positive WB detected in	Jurkat cells, A2780 cells, mouse brain tissue
Positive IP detected in	Mouse brain tissue
Positive IHC detected in	Human pancreas cancer tissue
Positive IF detected in	HepG2 cells
Recommended dilution:	WB: 1:500-1:5000
	IP: 1:500-1:5000
	IHC: 1:20-1:200
	IF: 1:10-1:100

Application key: WB = Western blotting, IHC = Immunohistochemistry, IF = Immunofluorescence, IP = Immunoprecipitation

Immunogen information

Immunogen:	Ag0388
GenBank accession number:	BC001465
Gene ID (NCBI):	10767
Full name:	HBS1-like (<i>S. cerevisiae</i>)

Product information

Purification method:	Antigen affinity purification
Storage:	PBS with 0.1% sodium azide and 50% glycerol pH 7.3. Store at -20°C.

**(IP:10359-1-AP, 4ug;
Detection:10359-1-AP 1:1000)
with mouse brain tissue lysate
4000ug.**